

Product datasheet for **TA386622**

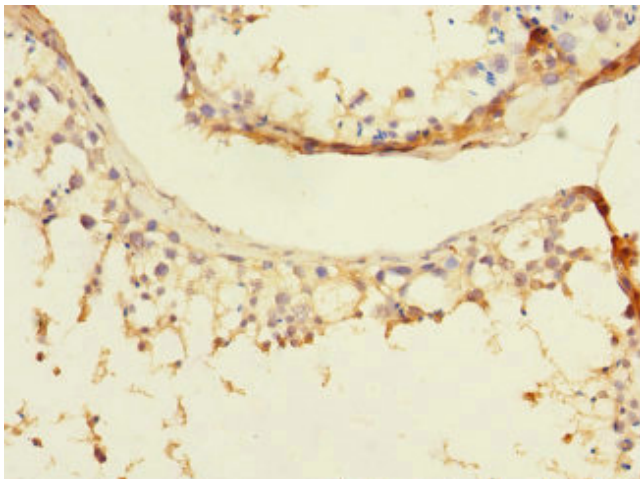
DIAPH2 Rabbit Polyclonal Antibody

Product data:

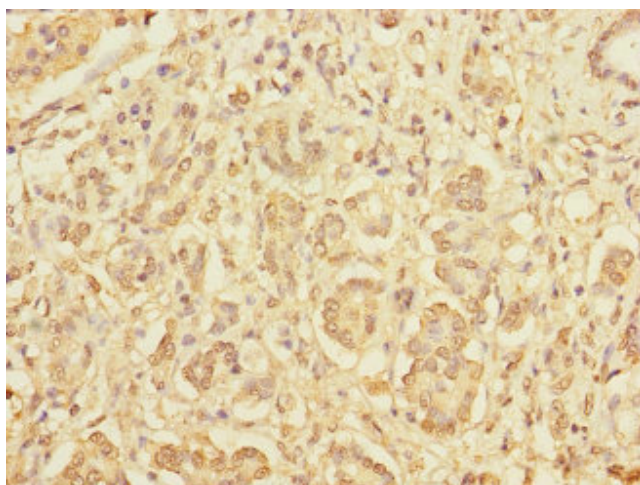
Product Type:	Primary Antibodies
Applications:	IHC, WB
Recommended Dilution:	Recommended dilution: WB:1:1000-1:5000, IHC:1:20-1:200
Reactivity:	Human
Host:	Rabbit
Isotype:	IgG
Clonality:	Polyclonal
Immunogen:	Recombinant Human Protein diaphanous homolog 2 protein (1-120AA)
Formulation:	PBS with 0.02% sodium azide, 50% glycerol, pH7.3.
Concentration:	lot specific
Purification:	Antigen Affinity Purified
Conjugation:	Unconjugated
Storage:	Upon receipt, store at -20°C or -80°C. Avoid repeated freeze.
Stability:	1 year from dispatch.
Database Link:	O60879
Background:	Could be involved in oogenesis. Involved in the regulation of endosome dynamics. Implicated in a novel signal transduction pathway, in which isoform 3 and CSK are sequentially activated by RHOD to regulate the motility of early endosomes through interactions with the actin cytoskeleton.



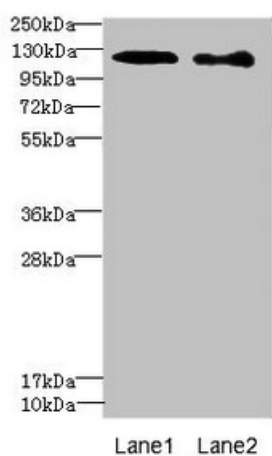
[View online »](#)

Product images:

Immunohistochemistry of paraffin-embedded human testis tissue using TA386622 at dilution of 1:100



Immunohistochemistry of paraffin-embedded human pancreatic cancer using TA386622 at dilution of 1:100



Western blot

All lanes: DIAPH2 antibody at 4.75 μ g/ml

Lane 1: 293T whole cell lysate

Lane 2: HeLa whole cell lysate

Secondary

Goat polyclonal to rabbit IgG at 1/10000 dilution

Predicted band size: 126, 125 kDa

Observed band size: 126 kDa