

Product datasheet for **TA386610**

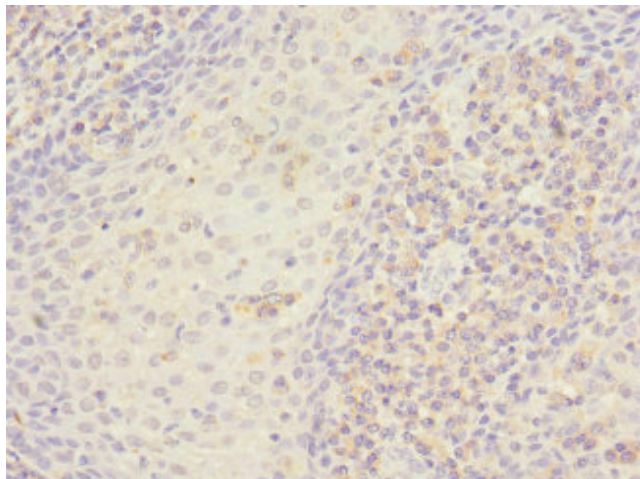
STX7 Rabbit Polyclonal Antibody

Product data:

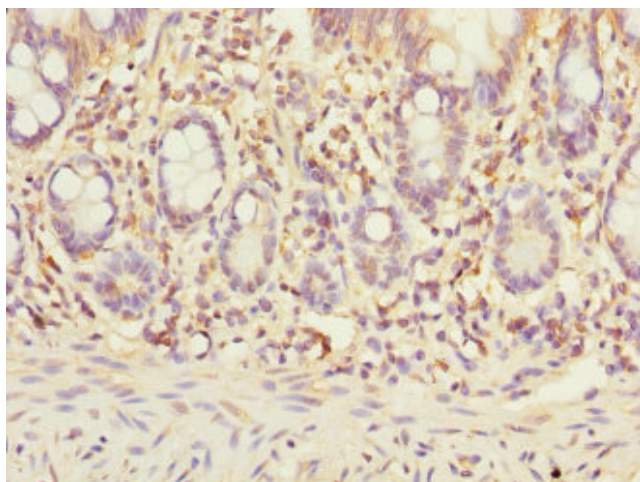
Product Type:	Primary Antibodies
Applications:	IHC, WB
Recommended Dilution:	Recommended dilution: WB:1:1000-1:5000, IHC:1:20-1:200
Reactivity:	Mouse, Human
Host:	Rabbit
Isotype:	IgG
Clonality:	Polyclonal
Immunogen:	Recombinant Human Syntaxin-7 protein (1-170AA)
Formulation:	PBS with 0.02% sodium azide, 50% glycerol, pH7.3.
Concentration:	lot specific
Purification:	Antigen Affinity Purified
Conjugation:	Unconjugated
Storage:	Upon receipt, store at -20°C or -80°C. Avoid repeated freeze.
Stability:	1 year from dispatch.
Database Link:	O15400
Background:	May be involved in protein trafficking from the plasma membrane to the early endosome (EE) as well as in homotypic fusion of endocytic organelles. Mediates the endocytic trafficking from early endosomes to late endosomes and lysosomes.



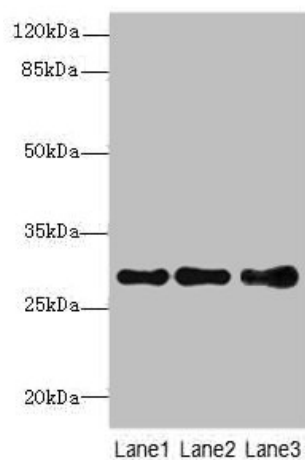
[View online »](#)

Product images:

Immunohistochemistry of paraffin-embedded human tonsil tissue using TA386610 at dilution of 1:100



Immunohistochemistry of paraffin-embedded human small intestine tissue using TA386610 at dilution of 1:100

**Western blot**

All lanes: STX7antibody at 1.39 μ g/ml

Lane 1: Mouse spleen tissue

Lane 2: Hela whole cell lysate

Lane 3: HepG2 whole cell lysate

Secondary

Goat polyclonal to rabbit IgG at 1/10000 dilution

Predicted band size: 30, 28 kDa

Observed band size: 30 kDa