

## Product datasheet for **TA386603M**

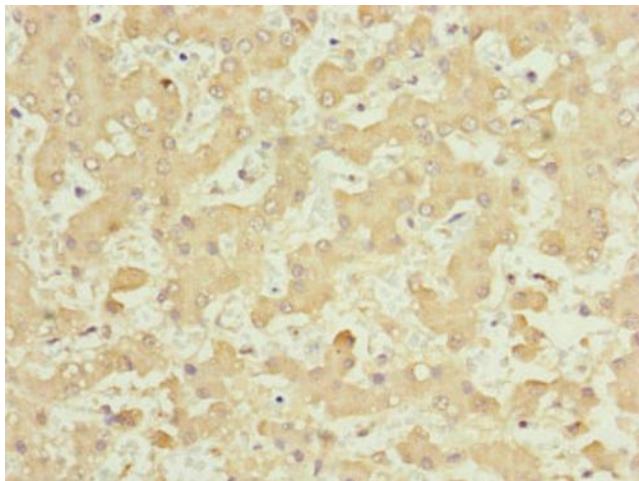
### NUF2 Rabbit Polyclonal Antibody

#### Product data:

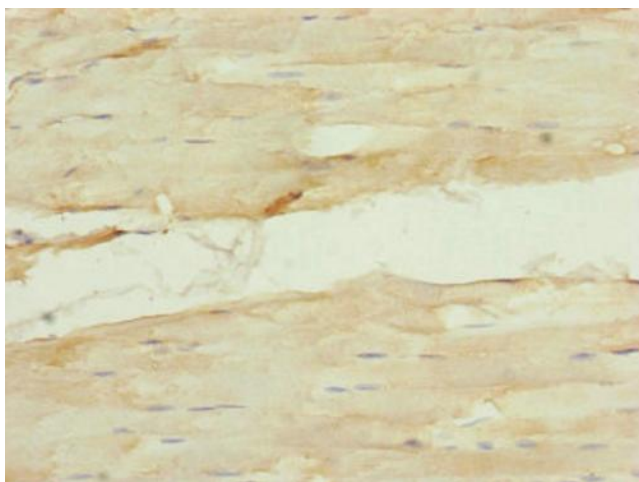
Product Type:	Primary Antibodies
Applications:	IHC, WB
Recommended Dilution:	Recommended dilution: WB:1:1000-1:5000, IHC:1:20-1:200
Reactivity:	Human
Host:	Rabbit
Isotype:	IgG
Clonality:	Polyclonal
Immunogen:	Recombinant Human Kinetochores protein Nuf2 protein (165-464AA)
Formulation:	PBS with 0.02% sodium azide, 50% glycerol, pH7.3.
Concentration:	lot specific
Purification:	Antigen Affinity Purified
Conjugation:	Unconjugated
Storage:	Upon receipt, store at -20°C or -80°C. Avoid repeated freeze.
Stability:	1 year from dispatch.
Database Link:	<a href="#">Q9BZD4</a>
Background:	Acts as a component of the essential kinetochores-associated NDC80 complex, which is required for chromosome segregation and spindle checkpoint activity (PubMed:12438418, PubMed:14654001, PubMed:15062103, PubMed:15235793, PubMed:15239953, PubMed:15548592, PubMed:17535814). Required for kinetochores integrity and the organization of stable microtubule binding sites in the outer plate of the kinetochores (PubMed:15548592). The NDC80 complex synergistically enhances the affinity of the SKA1 complex for microtubules and may allow the NDC80 complex to track depolymerizing microtubules (PubMed:23085020).



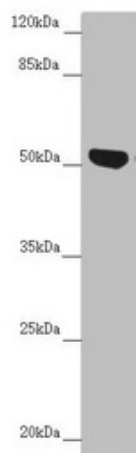
[View online »](#)

**Product images:**

Immunohistochemistry of paraffin-embedded human liver tissue using [TA386603] at dilution of 1:100



Immunohistochemistry of paraffin-embedded human skeletal muscle tissue using [TA386603] at dilution of 1:100



Western blot

All lanes: NUF2 antibody at 5.29µg/ml + Jurkat whole cell lysate

Secondary

Goat polyclonal to rabbit IgG at 1/10000 dilution

Predicted band size: 54 kDa

Observed band size: 54 kDa