

## Product datasheet for **TA386601**

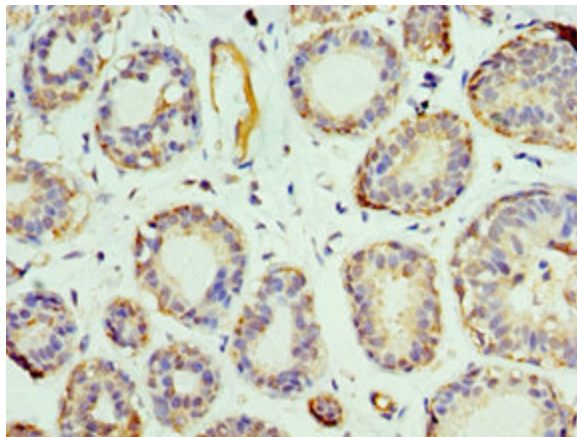
### PHB2 Rabbit Polyclonal Antibody

#### Product data:

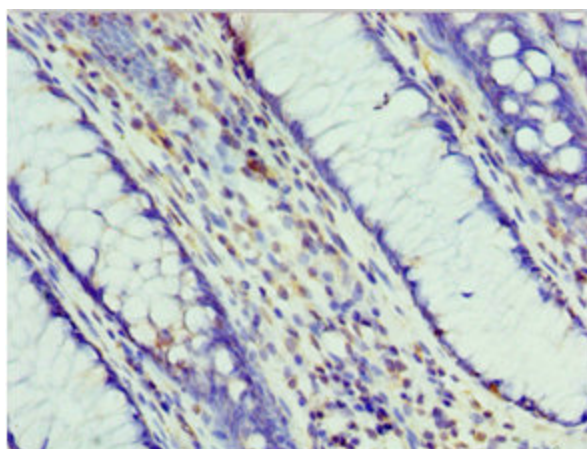
Product Type:	Primary Antibodies
Applications:	IHC, WB
Recommended Dilution:	Recommended dilution: WB:1:500-1:2000, IHC:1:20-1:200
Reactivity:	Human
Host:	Rabbit
Isotype:	IgG
Clonality:	Polyclonal
Immunogen:	Recombinant Human Prohibitin-2 protein (1-299AA)
Formulation:	PBS with 0.02% sodium azide, 50% glycerol, pH7.3.
Concentration:	lot specific
Purification:	Antigen Affinity Purified
Conjugation:	Unconjugated
Storage:	Upon receipt, store at -20°C or -80°C. Avoid repeated freeze.
Stability:	1 year from dispatch.
Database Link:	<a href="#">Q99623</a>
Background:	Acts as a mediator of transcriptional repression by nuclear hormone receptors via recruitment of histone deacetylases (By similarity). Functions as an estrogen receptor (ER)-selective coregulator that potentiates the inhibitory activities of antiestrogens and represses the activity of estrogens. Competes with NCOA1 for modulation of ER transcriptional activity. Probably involved in regulating mitochondrial respiration activity and in aging.



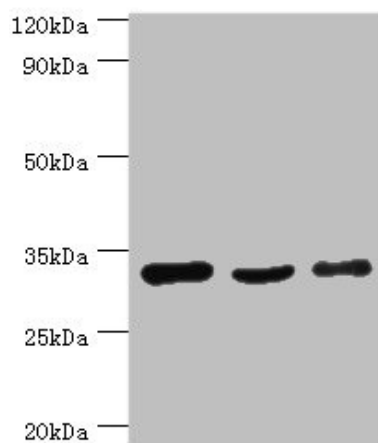
[View online »](#)

**Product images:**

Immunohistochemistry of paraffin-embedded human breast cancer using TA386601 at dilution of 1:100



Immunohistochemistry of paraffin-embedded human colon cancer using TA386601 at dilution of 1:100



Western blot

All lanes: PHB2 antibody at 3 $\mu$ g/ml

Lane 1: HeLa whole cell lysate

Lane 2: K562 whole cell lysate

Lane 3: MCF-7 whole cell lysate

Secondary

Goat polyclonal to rabbit IgG at 1/10000 dilution

Predicted band size: 34, 30 kDa

Observed band size: 34 kDa