

## Product datasheet for **TA386599**

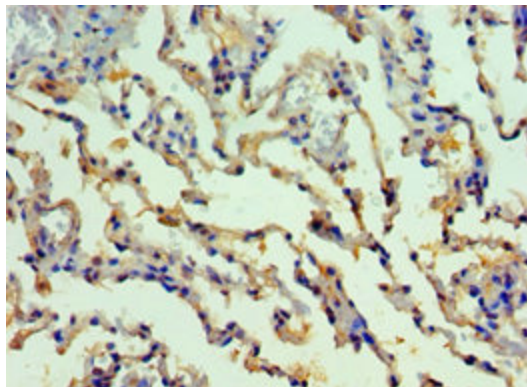
### SMYD1 Rabbit Polyclonal Antibody

#### Product data:

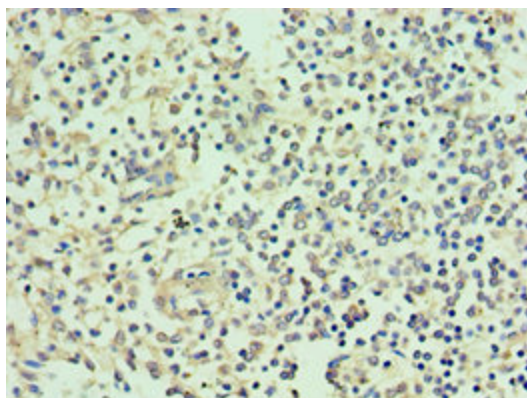
Product Type:	Primary Antibodies
Applications:	IHC, WB
Recommended Dilution:	Recommended dilution: WB:1:500-1:2000, IHC:1:20-1:200
Reactivity:	Mouse, Human
Host:	Rabbit
Isotype:	IgG
Clonality:	Polyclonal
Immunogen:	Recombinant Human Histone-lysine N-methyltransferase SMYD1 protein (1-350AA)
Formulation:	PBS with 0.02% sodium azide, 50% glycerol, pH7.3.
Concentration:	lot specific
Purification:	Antigen Affinity Purified
Conjugation:	Unconjugated
Storage:	Upon receipt, store at -20°C or -80°C. Avoid repeated freeze.
Stability:	1 year from dispatch.
Database Link:	<a href="#">Q8NB12</a>
Background:	Methylates histone H3 at 'Lys-4' (H3K4me), seems able to perform both mono-, di-, and trimethylation. Acts as a transcriptional repressor. Essential for cardiomyocyte differentiation and cardiac morphogenesis.



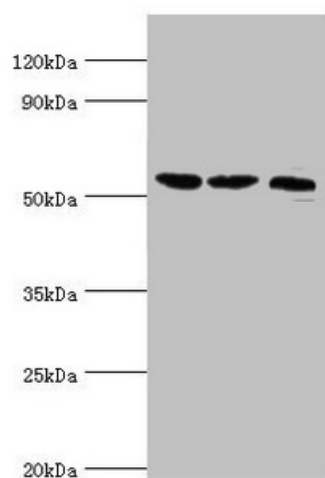
[View online »](#)

**Product images:**

Immunohistochemistry of paraffin-embedded human lung tissue using TA386599 at dilution of 1:100



Immunohistochemistry of paraffin-embedded human spleen tissue using TA386599 at dilution of 1:100



Western blot

All lanes: Histone-lysine N-methyltransferase

SMYD1 antibody at 2 $\mu$ g/ml

Lane 1: Mouse heart tissue

Lane 2: 293T whole cell lysate

Lane 3: Mouse skeletal muscle tissue

Secondary

Goat polyclonal to rabbit IgG at 1/10000 dilution

Predicted band size: 57 kDa

Observed band size: 57 kDa