

Product datasheet for **TA386592M**

CDR2 Rabbit Polyclonal Antibody

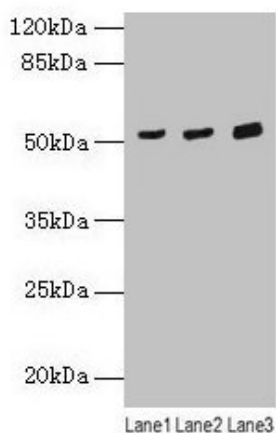
Product data:

Product Type:	Primary Antibodies
Applications:	IHC, WB
Recommended Dilution:	Recommended dilution: WB:1:1000-1:5000, IHC:1:20-1:200
Reactivity:	Mouse, Human
Host:	Rabbit
Isotype:	IgG
Clonality:	Polyclonal
Immunogen:	Recombinant Human Cerebellar degeneration-related protein 2 protein (1-454AA)
Formulation:	Preservative: 0.03% Proclin 300 Constituents: 50% Glycerol, 0.01M PBS, PH 7.4
Concentration:	lot specific
Purification:	>95%, Protein G purified
Conjugation:	Unconjugated
Storage:	Upon receipt, store at -20°C or -80°C. Avoid repeated freeze.
Stability:	1 year from dispatch.
Database Link:	Q01850
Background:	Antibody-associated paraneoplastic cerebellar degeneration (the Yo syndrome) is an uncommon disorder in which an immune response is specifically directed against tumor tissue and the cerebellum.



[View online »](#)

Product images:



Western blot

All lanes: CDR2 antibody at 4 μ g/ml

Lane 1: Mouse lung tissue

Lane 2: HeLa whole cell lysate

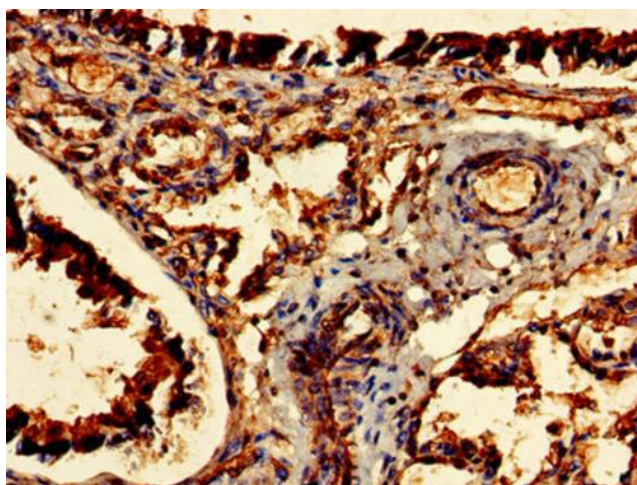
Lane 3: HepG2 whole cell lysate

Secondary

Goat polyclonal to rabbit IgG at 1/10000 dilution

Predicted band size: 52 kDa

Observed band size: 52 kDa



Immunohistochemistry of paraffin-embedded human lung tissue using [TA386592] at dilution of 1:100