

## Product datasheet for **TA386591**

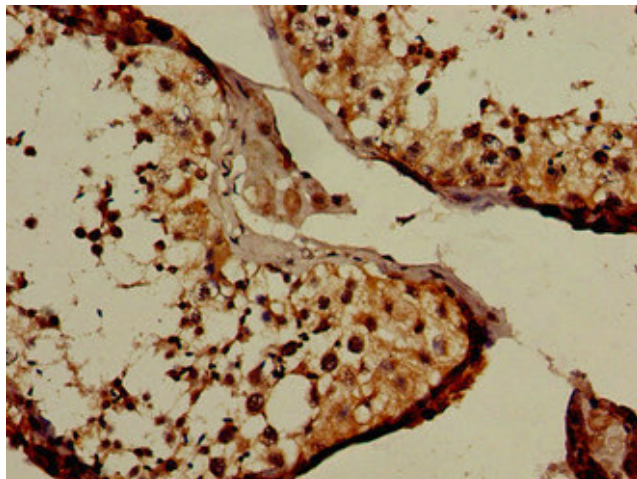
### **NUP107 Rabbit Polyclonal Antibody**

#### **Product data:**

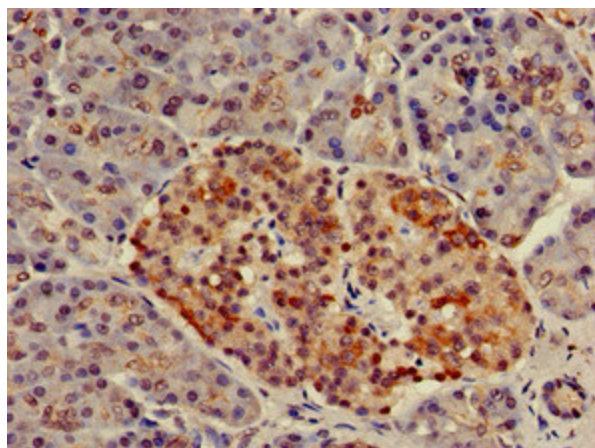
<b>Product Type:</b>	Primary Antibodies
<b>Applications:</b>	IHC, WB
<b>Recommended Dilution:</b>	Recommended dilution: WB:1:500-1:5000, IHC:1:20-1:200
<b>Reactivity:</b>	Mouse, Human
<b>Host:</b>	Rabbit
<b>Isotype:</b>	IgG
<b>Clonality:</b>	Polyclonal
<b>Immunogen:</b>	Recombinant Human Nuclear pore complex protein Nup107 protein (1-66AA)
<b>Formulation:</b>	Preservative: 0.03% Proclin 300 Constituents: 50% Glycerol, 0.01M PBS, pH 7.4
<b>Concentration:</b>	lot specific
<b>Purification:</b>	>95%, Protein G purified
<b>Conjugation:</b>	Unconjugated
<b>Storage:</b>	Upon receipt, store at -20°C or -80°C. Avoid repeated freeze.
<b>Stability:</b>	1 year from dispatch.
<b>Database Link:</b>	<a href="#">P57740</a>
<b>Background:</b>	Plays a role in the nuclear pore complex (NPC) assembly and/or maintenance. Required for the assembly of peripheral proteins into the NPC. May anchor NUP62 to the NPC.



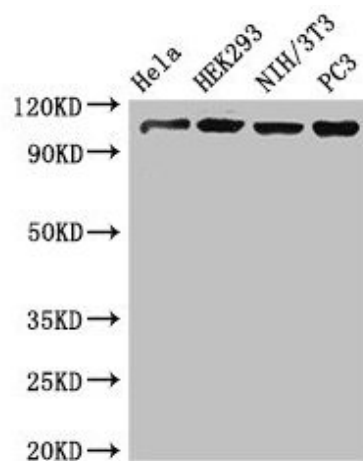
[View online »](#)

**Product images:**

Immunohistochemistry of paraffin-embedded human testis tissue using TA386591 at dilution of 1:100



Immunohistochemistry of paraffin-embedded human pancreatic tissue using TA386591 at dilution of 1:100

**Western Blot**

Positive WB detected in: HeLa whole cell lysate, HEK293 whole cell lysate, NIH/3T3 whole cell lysate, PC-3 whole cell lysate

All lanes: NUP107 antibody at 3.4 $\mu$ g/ml

Secondary

Goat polyclonal to rabbit IgG at 1/50000 dilution

Predicted band size: 107, 104, 80 kDa

Observed band size: 107 kDa