

Product datasheet for **TA386586M**

CCT8 Rabbit Polyclonal Antibody

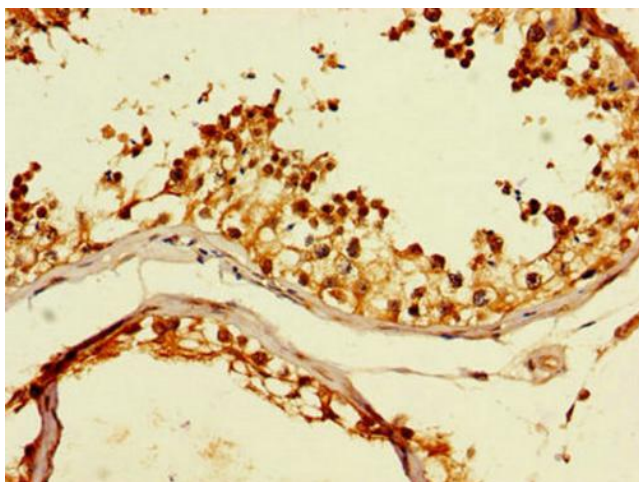
Product data:

Product Type:	Primary Antibodies
Applications:	IF, IHC, WB
Recommended Dilution:	Recommended dilution: WB:1:1000-1:5000, IHC:1:20-1:200, IF:1:50-1:200
Reactivity:	Mouse, Human
Host:	Rabbit
Isotype:	IgG
Clonality:	Polyclonal
Immunogen:	Recombinant Human T-complex protein 1 subunit theta protein (224-491AA)
Formulation:	Preservative: 0.03% Proclin 300 Constituents: 50% Glycerol, 0.01M PBS, PH 7.4
Concentration:	lot specific
Purification:	>95%, Protein G purified
Conjugation:	Unconjugated
Storage:	Upon receipt, store at -20°C or -80°C. Avoid repeated freeze.
Stability:	1 year from dispatch.
Database Link:	P50990
Background:	Molecular chaperone; assists the folding of proteins upon ATP hydrolysis. As part of the BBS/CCT complex may play a role in the assembly of BBSome, a complex involved in ciliogenesis regulating transports vesicles to the cilia. Known to play a role, in vitro, in the folding of actin and tubulin.

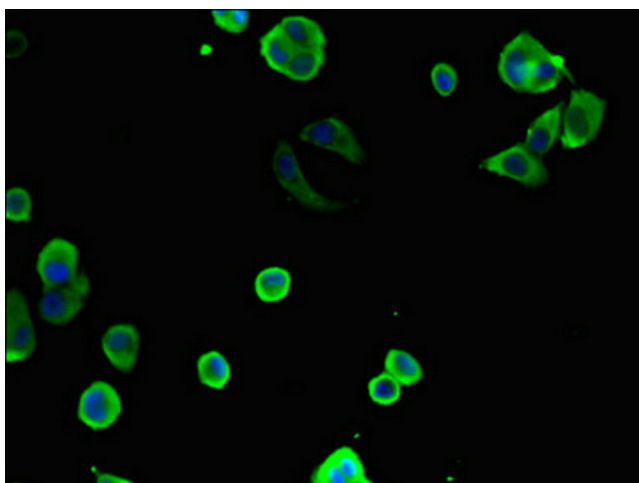


[View online »](#)

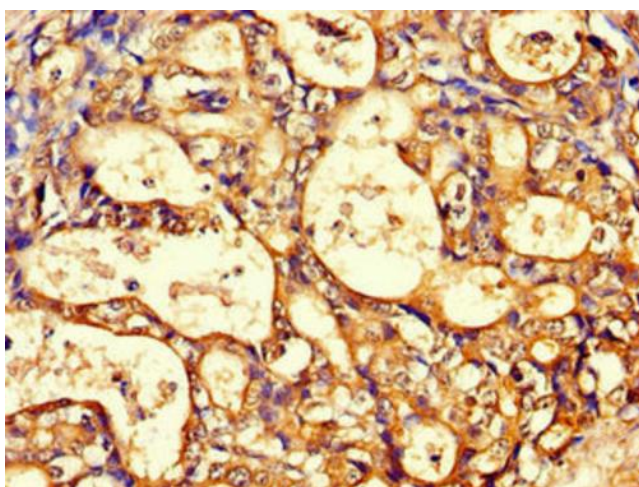
Product images:



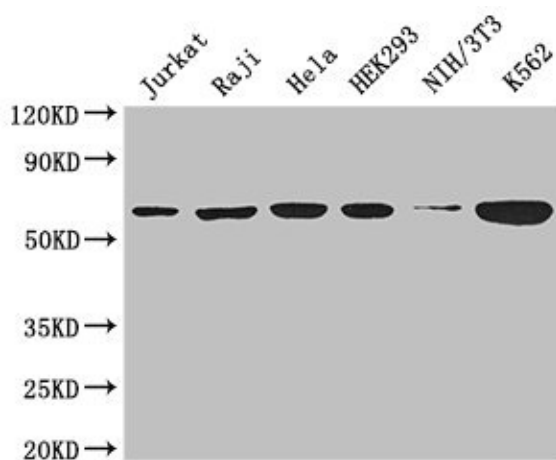
Immunohistochemistry of paraffin-embedded human testis tissue using [TA386586] at dilution of 1:100



Immunofluorescent analysis of MCF-7 cells using [TA386586] at dilution of 1:100 and Alexa Fluor 488-conjugated AffiniPure Goat Anti-Rabbit IgG(H+L)



Immunohistochemistry of paraffin-embedded human gastric cancer using [TA386586] at dilution of 1:100



Western Blot

Positive WB detected in: Jurkat whole cell lysate, Raji whole cell lysate, HeLa whole cell lysate, HEK293 whole cell lysate, NIH/3T3 whole cell lysate, K562 whole cell lysate

All lanes: CCT8 antibody at 3 μ g/ml

Secondary

Goat polyclonal to rabbit IgG at 1/50000 dilution

Predicted band size: 60, 58, 52 kDa

Observed band size: 60 kDa