

Product datasheet for **TA386583**

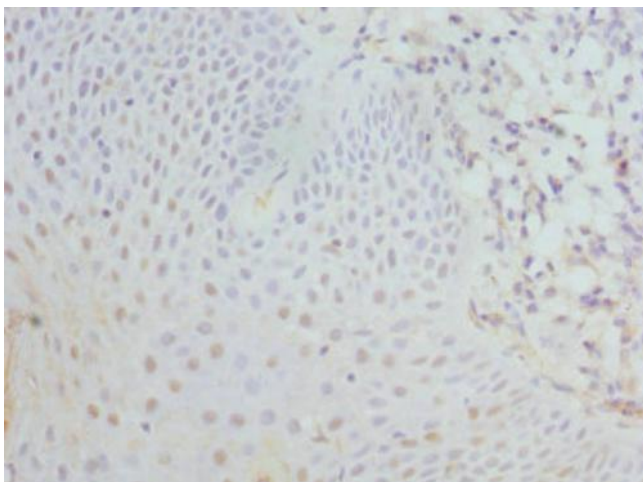
EIF2S3 Rabbit Polyclonal Antibody

Product data:

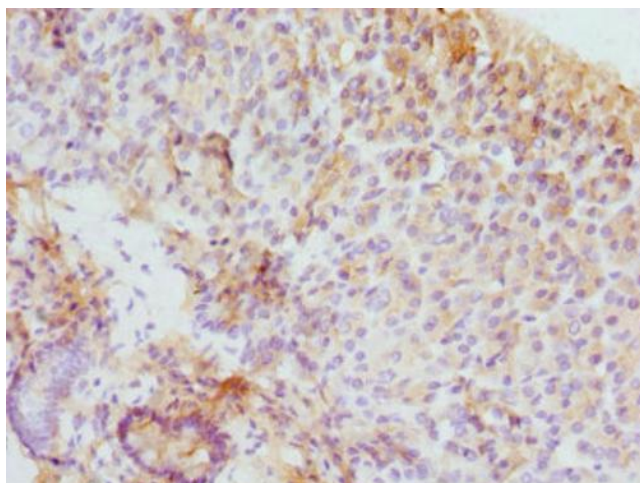
Product Type:	Primary Antibodies
Applications:	IHC, WB
Recommended Dilution:	Recommended dilution: WB:1:1000-1:5000, IHC:1:20-1:200
Reactivity:	Human
Host:	Rabbit
Isotype:	IgG
Clonality:	Polyclonal
Immunogen:	Recombinant Human Eukaryotic translation initiation factor 2 subunit 3 protein (173-472AA)
Formulation:	PBS with 0.02% sodium azide, 50% glycerol, pH7.3.
Concentration:	lot specific
Purification:	Antigen Affinity Purified
Conjugation:	Unconjugated
Storage:	Upon receipt, store at -20°C or -80°C. Avoid repeated freeze.
Stability:	1 year from dispatch.
Database Link:	P41091
Background:	As a subunit of eukaryotic initiation factor 2 (eIF2), involved in the early steps of protein synthesis. In the presence of GTP, eIF2 forms a ternary complex with initiator tRNA Met-tRNAi and then recruits the 40S ribosomal complex, a step that determines the rate of protein translation. This step is followed by mRNA binding to form the 43S pre-initiation complex. Junction of the 60S ribosomal subunit to form the 80S initiation complex is preceded by hydrolysis of the GTP bound to eIF2 and release of an eIF2-GDP binary complex. In order for eIF2 to recycle and catalyze another round of initiation, the GDP bound to eIF2 must exchange with GTP by way of a reaction catalyzed by eIF2B (By similarity). Along with its paralog on chromosome Y, may contribute to spermatogenesis up to the round spermatid stage (By similarity).


[View online »](#)

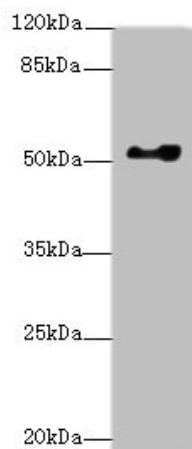
Product images:



Immunohistochemistry of paraffin-embedded human tonsil tissue using TA386583 at dilution of 1:100



Immunohistochemistry of paraffin-embedded human pancreatic tissue using TA386583 at dilution of 1:100



Western blot

All lanes: EIF2S3 antibody at 0.83µg/ml + HeLa whole cell lysate

Secondary

Goat polyclonal to rabbit IgG at 1/10000 dilution

Predicted band size: 51 kDa

Observed band size: 51 kDa