

Product datasheet for **TA386579M**

EFEMP2 Rabbit Polyclonal Antibody

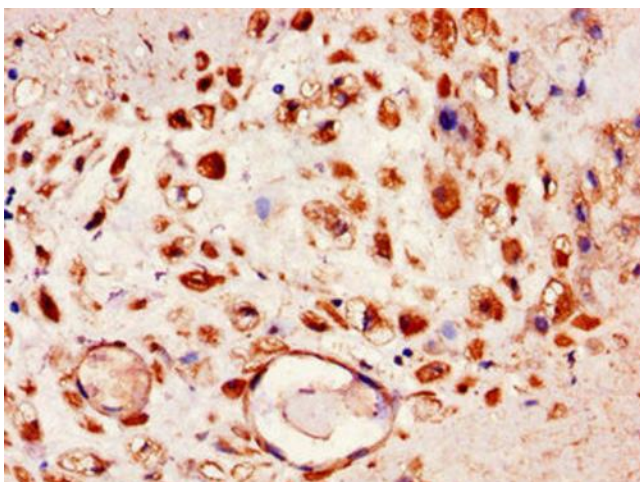
Product data:

Product Type:	Primary Antibodies
Applications:	IHC, WB
Recommended Dilution:	Recommended dilution: WB:1:1000-1:5000, IHC:1:20-1:200
Reactivity:	Mouse, Human
Host:	Rabbit
Isotype:	IgG
Clonality:	Polyclonal
Immunogen:	Recombinant Human EGF-containing fibulin-like extracellular matrix protein 2 protein (26-165AA)
Formulation:	Preservative: 0.03% Proclin 300 Constituents: 50% Glycerol, 0.01M PBS, PH 7.4
Concentration:	lot specific
Purification:	>95%, Protein G purified
Conjugation:	Unconjugated
Storage:	Upon receipt, store at -20°C or -80°C. Avoid repeated freeze.
Stability:	1 year from dispatch.
Database Link:	<u>O95967</u>
Background:	basement membrane, extracellular exosome, extracellular region, extracellular vesicle, extracellular matrix structural constituent

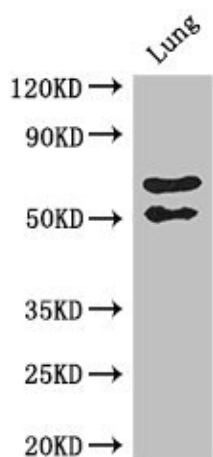


[View online »](#)

Product images:



Immunohistochemistry of paraffin-embedded human placenta tissue using [TA386579] at dilution of 1:100



Western Blot
Positive WB detected in: Mouse lung tissue
All lanes: EFEMP2 antibody at 2.7µg/ml
Secondary
Goat polyclonal to rabbit IgG at 1/50000 dilution
Predicted band size: 50 kDa
Observed band size: 50, 70 kDa