

## Product datasheet for **TA386576**

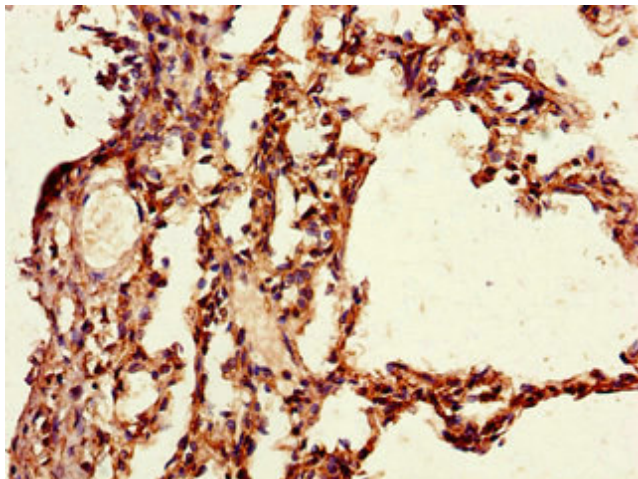
### PAIP2 Rabbit Polyclonal Antibody

#### Product data:

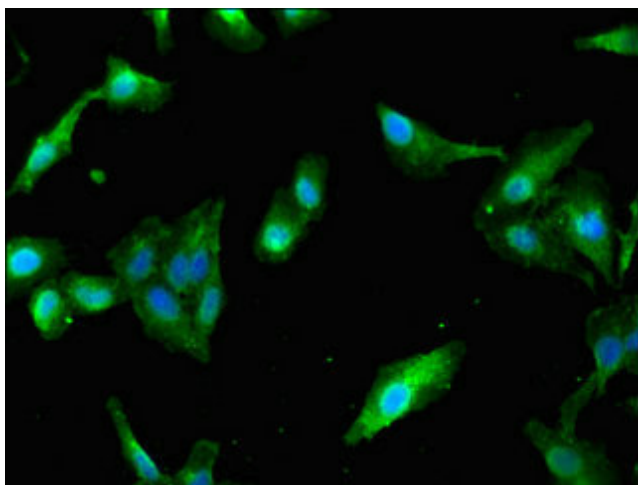
Product Type:	Primary Antibodies
Applications:	IF, IHC, WB
Recommended Dilution:	Recommended dilution: WB:1:500-1:5000, IHC:1:20-1:200, IF:1:50-1:200
Reactivity:	Mouse, Human
Host:	Rabbit
Isotype:	IgG
Clonality:	Polyclonal
Immunogen:	Recombinant Human Polyadenylate-binding protein-interacting protein 2 protein (1-127AA)
Formulation:	Preservative: 0.03% Proclin 300 Constituents: 50% Glycerol, 0.01M PBS, PH 7.4
Concentration:	lot specific
Purification:	>95%, Protein G purified
Conjugation:	Unconjugated
Storage:	Upon receipt, store at -20°C or -80°C. Avoid repeated freeze.
Stability:	1 year from dispatch.
Database Link:	<a href="#">Q9BPZ3</a>
Background:	Acts as a repressor in the regulation of translation initiation of poly(A)-containing mRNAs. Its inhibitory activity on translation is mediated via its action on PABPC1. Displaces the interaction of PABPC1 with poly(A) RNA and competes with PAIP1 for binding to PABPC1. Its association with PABPC1 results in disruption of the cytoplasmic poly(A) RNP structure organization.



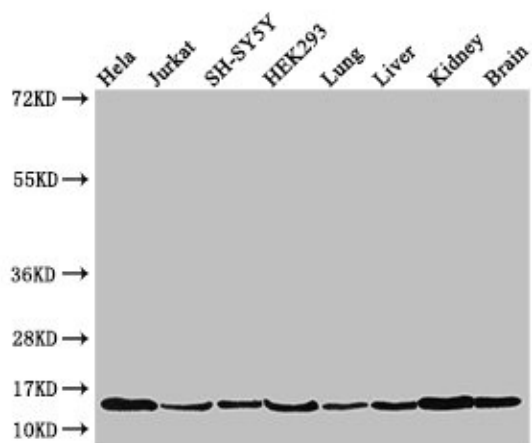
[View online »](#)

**Product images:**

Immunohistochemistry of paraffin-embedded human lung tissue using TA386576 at dilution of 1:100



Immunofluorescent analysis of HeLa cells using TA386576 at dilution of 1:100 and Alexa Fluor 488-conjugated AffiniPure Goat Anti-Rabbit IgG(H+L)



#### Western Blot

Positive WB detected in: HeLa whole cell lysate, Jurkat whole cell lysate, SH-SY5Y whole cell lysate, HEK293 whole cell lysate, Mouse lung tissue, Mouse liver tissue, Mouse kidney tissue, Mouse brain tissue

All lanes: PAIP2 antibody at 3.5 $\mu$ g/ml

Secondary

Goat polyclonal to rabbit IgG at 1/50000 dilution

Predicted band size: 15 kDa

Observed band size: 15 kDa