

Product datasheet for **TA386573M**

KCTD15 Rabbit Polyclonal Antibody

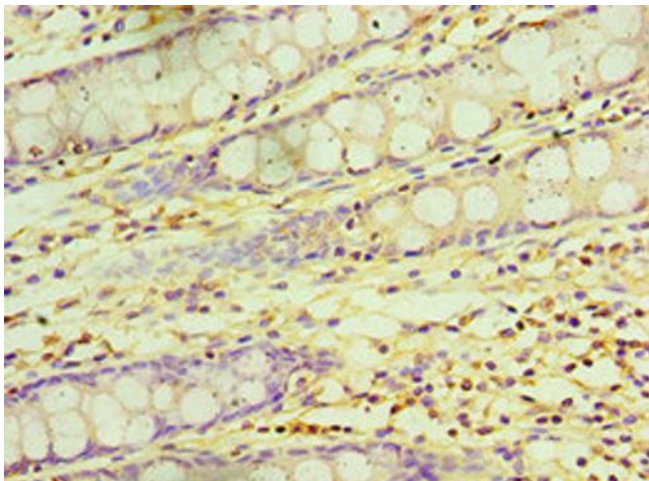
Product data:

Product Type:	Primary Antibodies
Applications:	IHC, WB
Recommended Dilution:	Recommended dilution: WB:1:500-1:2000, IHC:1:20-1:200
Reactivity:	Human
Host:	Rabbit
Isotype:	IgG
Clonality:	Polyclonal
Immunogen:	Recombinant Human BTB/POZ domain-containing protein KCTD15 protein (1-234AA)
Formulation:	PBS with 0.02% sodium azide, 50% glycerol, pH7.3.
Concentration:	lot specific
Purification:	Antigen Affinity Purified
Conjugation:	Unconjugated
Storage:	Upon receipt, store at -20°C or -80°C. Avoid repeated freeze.
Stability:	1 year from dispatch.
Database Link:	Q96S11
Background:	During embryonic development, interferes with neural crest formation (By similarity). Inhibits AP2 transcriptional activity by interaction with its activation domain.

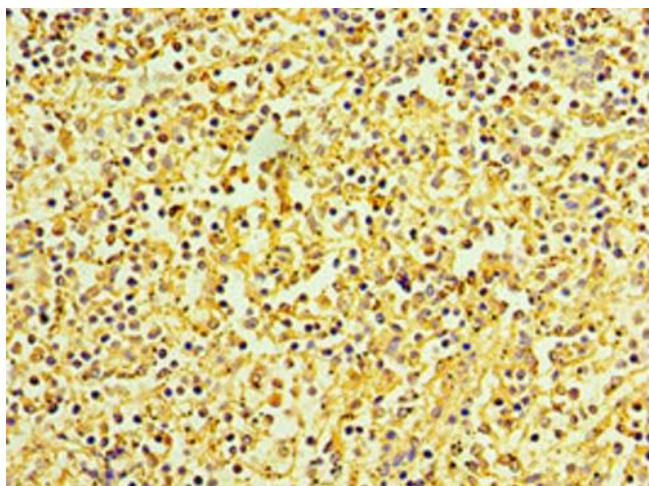


[View online »](#)

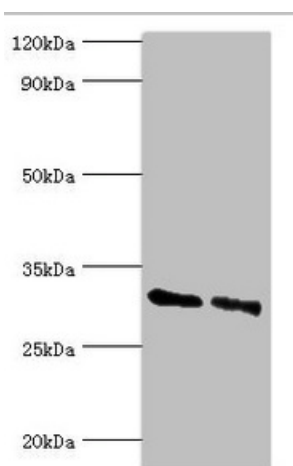
Product images:



Immunohistochemistry of paraffin-embedded human colon tissue using [TA386573] at dilution of 1:100



Immunohistochemistry of paraffin-embedded human spleen tissue using [TA386573] at dilution of 1:100



Western blot

All lanes: KCTD15 antibody at 8 μ g/ml

Lane 1: 293T whole cell lysate

Lane 2: Hela whole cell lysate

Secondary

Goat polyclonal to rabbit IgG at 1/10000 dilution

Predicted band size: 32, 27 kDa

Observed band size: 32 kDa