

## Product datasheet for **TA386569**

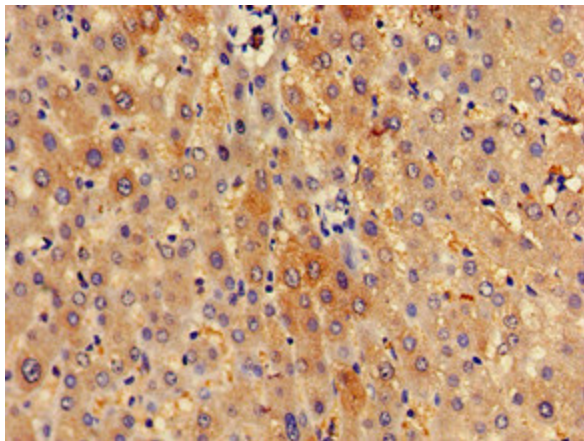
### SPRED1 Rabbit Polyclonal Antibody

#### Product data:

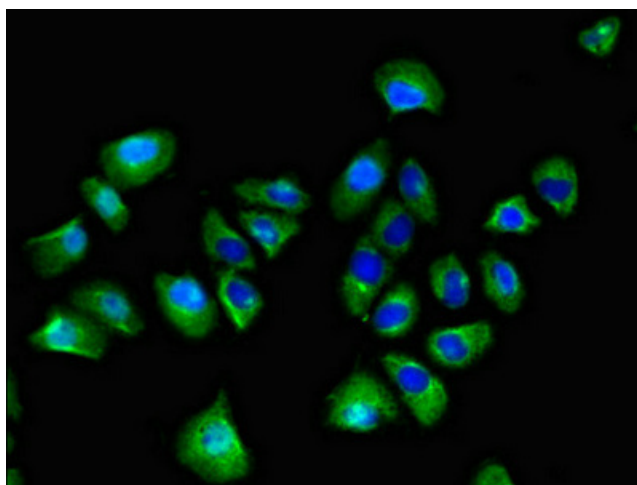
Product Type:	Primary Antibodies
Applications:	IF, IHC, WB
Recommended Dilution:	Recommended dilution: WB:1:500-1:5000, IHC:1:20-1:200, IF:1:50-1:200
Reactivity:	Human
Host:	Rabbit
Isotype:	IgG
Clonality:	Polyclonal
Immunogen:	Recombinant Human Sprouty-related, EVH1 domain-containing protein 1 protein (123-311AA)
Formulation:	Preservative: 0.03% Proclin 300 Constituents: 50% Glycerol, 0.01M PBS, pH 7.4
Concentration:	lot specific
Purification:	>95%, Protein G purified
Conjugation:	Unconjugated
Storage:	Upon receipt, store at -20°C or -80°C. Avoid repeated freeze.
Stability:	1 year from dispatch.
Database Link:	<a href="#">Q7Z699</a>
Background:	Tyrosine kinase substrate that inhibits growth-factor-mediated activation of MAP kinase. Negatively regulates hematopoiesis of bone marrow (By similarity).



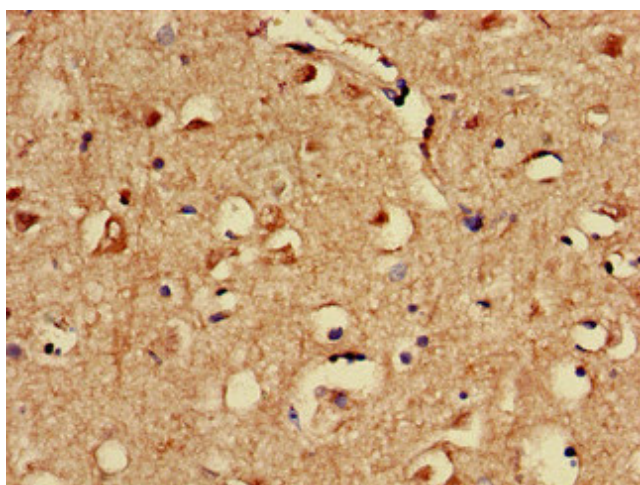
[View online »](#)

**Product images:**

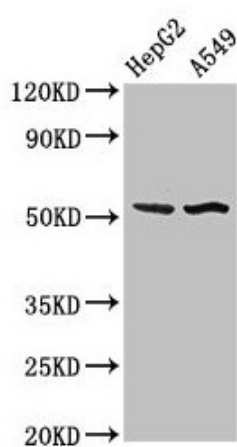
Immunohistochemistry of paraffin-embedded human liver tissue using TA386569 at dilution of 1:100



Immunofluorescent analysis of A549 cells using TA386569 at dilution of 1:100 and Alexa Fluor 488-conjugated AffiniPure Goat Anti-Rabbit IgG(H+L)



Immunohistochemistry of paraffin-embedded human brain tissue using TA386569 at dilution of 1:100



Western Blot  
Positive WB detected in: HepG2 whole cell lysate, A549 whole cell lysate  
All lanes: SPRED1 antibody at 3 $\mu$ g/ml  
Secondary  
Goat polyclonal to rabbit IgG at 1/50000 dilution  
Predicted band size: 51 kDa  
Observed band size: 51 kDa