

Product datasheet for **TA386563M**

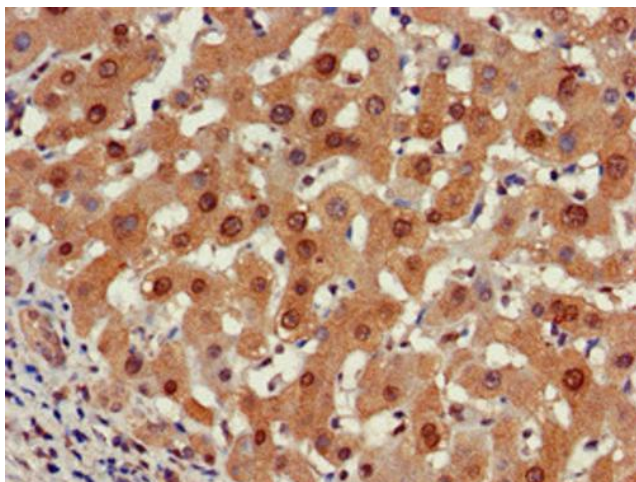
PSMA5 Rabbit Polyclonal Antibody

Product data:

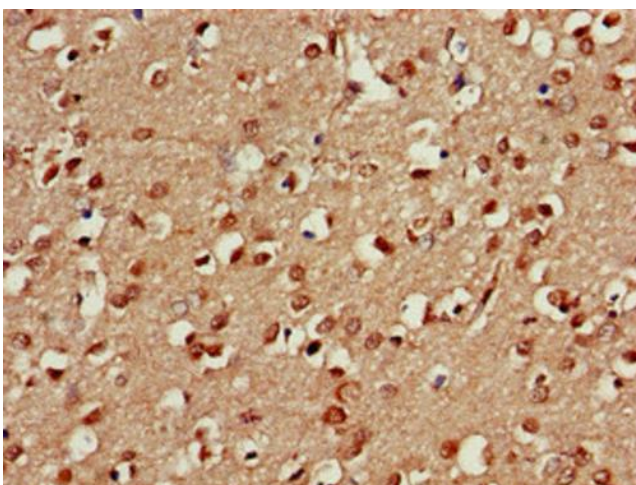
Product Type:	Primary Antibodies
Applications:	IHC, WB
Recommended Dilution:	Recommended dilution: WB:1:500-1:5000, IHC:1:20-1:200
Reactivity:	Rat, Human
Host:	Rabbit
Isotype:	IgG
Clonality:	Polyclonal
Immunogen:	Recombinant Human Proteasome subunit alpha type-5 protein (124-180AA)
Formulation:	Preservative: 0.03% Proclin 300 Constituents: 50% Glycerol, 0.01M PBS, pH 7.4
Concentration:	lot specific
Purification:	>95%, Protein G purified
Conjugation:	Unconjugated
Storage:	Upon receipt, store at -20°C or -80°C. Avoid repeated freeze.
Stability:	1 year from dispatch.
Database Link:	P28066
Background:	The proteasome is a multicatalytic proteinase complex which is characterized by its ability to cleave peptides with Arg, Phe, Tyr, Leu, and Glu adjacent to the leaving group at neutral or slightly basic pH. The proteasome has an ATP-dependent proteolytic activity.

[View online »](#)

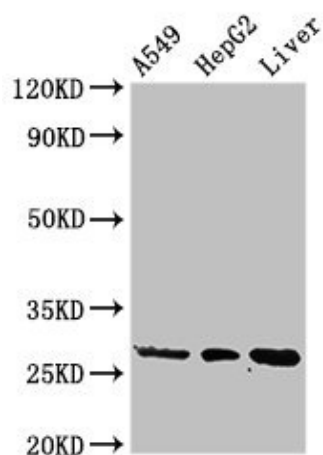
Product images:



Immunohistochemistry of paraffin-embedded human liver cancer using [TA386563] at dilution of 1:100



Immunohistochemistry of paraffin-embedded human brain tissue using [TA386563] at dilution of 1:100



Western Blot

Positive WB detected in: A549 whole cell lysate, HepG2 whole cell lysate, Rat liver tissue

All lanes: PSMA5 antibody at 3 μ g/ml

Secondary

Goat polyclonal to rabbit IgG at 1/50000 dilution

Predicted band size: 27, 21 kDa

Observed band size: 27 kDa