

Product datasheet for **TA386562M**

ALDOC Rabbit Polyclonal Antibody

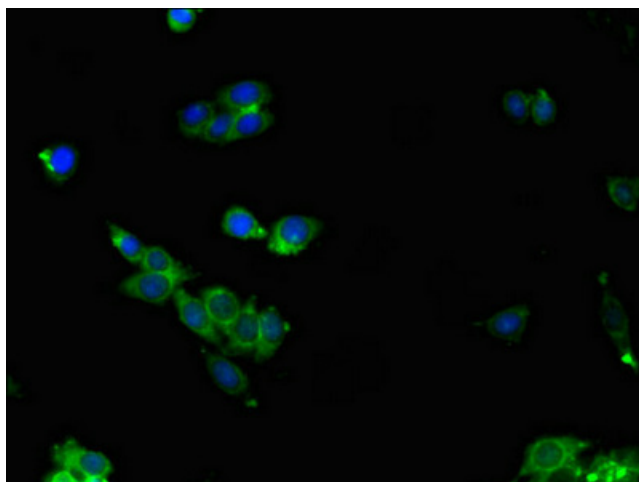
Product data:

Product Type:	Primary Antibodies
Applications:	IF, IHC, WB
Recommended Dilution:	Recommended dilution: WB:1:2000-1:5000, IHC:1:20-1:200, IF:1:50-1:200
Reactivity:	Mouse, Human
Host:	Rabbit
Isotype:	IgG
Clonality:	Polyclonal
Immunogen:	Recombinant Human Fructose-bisphosphate aldolase C protein (190-354AA)
Formulation:	Preservative: 0.03% Proclin 300 Constituents: 50% Glycerol, 0.01M PBS, PH 7.4
Concentration:	lot specific
Purification:	>95%, Protein G purified
Conjugation:	Unconjugated
Storage:	Upon receipt, store at -20°C or -80°C. Avoid repeated freeze.
Stability:	1 year from dispatch.
Database Link:	P09972
Background:	cytoskeleton, cytosol, extracellular exosome, cytoskeletal protein binding, fructose-bisphosphate aldolase activity, canonical glycolysis, epithelial cell differentiation, fructose 1,6-bisphosphate metabolic process, fructose metabolic process, gluconeogenesis

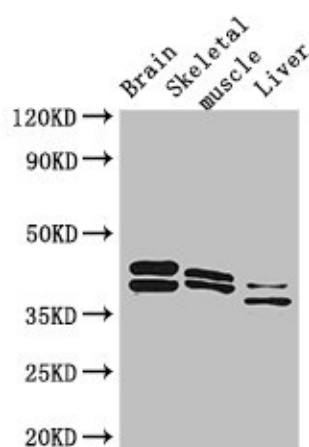


[View online »](#)

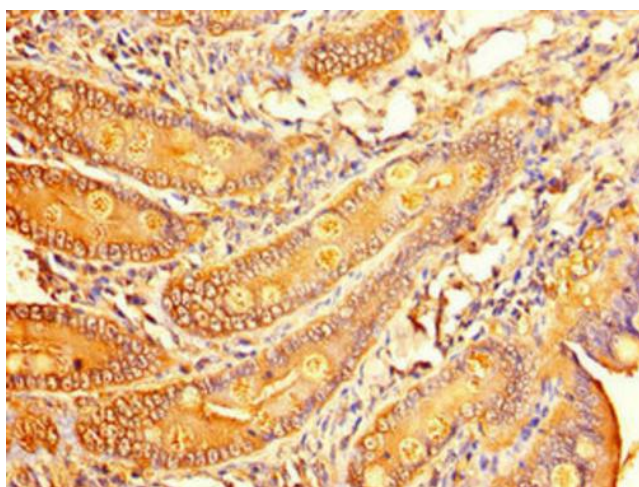
Product images:



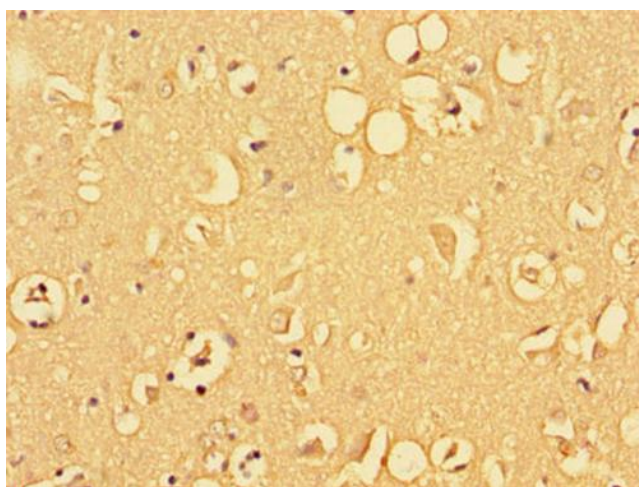
Immunofluorescent analysis of HepG2 cells using [TA386562] at dilution of 1:100 and Alexa Fluor 488-conjugated AffiniPure Goat Anti-Rabbit IgG(H+L)



Western Blot
Positive WB detected in: Mouse brain tissue, Mouse skeletal muscle tissue, Mouse liver tissue
All lanes: ALDOC antibody at 3µg/ml
Secondary
Goat polyclonal to rabbit IgG at 1/50000 dilution
Predicted band size: 40 kDa
Observed band size: 40, 36, 42 kDa



Immunohistochemistry of paraffin-embedded human small intestine tissue using [TA386562] at dilution of 1:100



Immunohistochemistry of paraffin-embedded human brain tissue using [TA386562] at dilution of 1:100