

Product datasheet for **TA386560M**

CER1 Rabbit Polyclonal Antibody

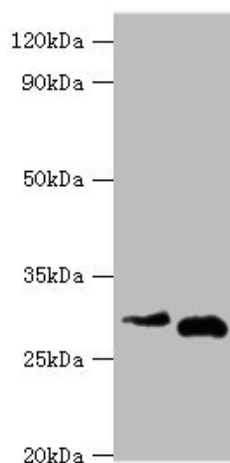
Product data:

Product Type:	Primary Antibodies
Applications:	WB
Recommended Dilution:	Recommended dilution: WB:1:500-1:2000
Reactivity:	Rat, Human
Host:	Rabbit
Isotype:	IgG
Clonality:	Polyclonal
Immunogen:	Recombinant Human Cerberus protein (18-267AA)
Formulation:	PBS with 0.02% sodium azide, 50% glycerol, pH7.3.
Concentration:	lot specific
Purification:	Antigen Affinity Purified
Conjugation:	Unconjugated
Storage:	Upon receipt, store at -20°C or -80°C. Avoid repeated freeze.
Stability:	1 year from dispatch.
Database Link:	O95813
Background:	Cytokine that may play a role in anterior neural induction and somite formation during embryogenesis in part through a BMP-inhibitory mechanism. Can regulate Nodal signaling during gastrulation as well as the formation and patterning of the primitive streak (By similarity).



[View online »](#)

Product images:



Western blot

All lanes: Cerberus antibody at 2 μ g/ml

Lane 1: Hela whole cell lysate

Lane 2: Rat kidney tissue

Secondary

Goat polyclonal to rabbit IgG at 1/10000 dilution

Predicted band size: 30 kDa

Observed band size: 30 kDa