

## Product datasheet for **TA386554**

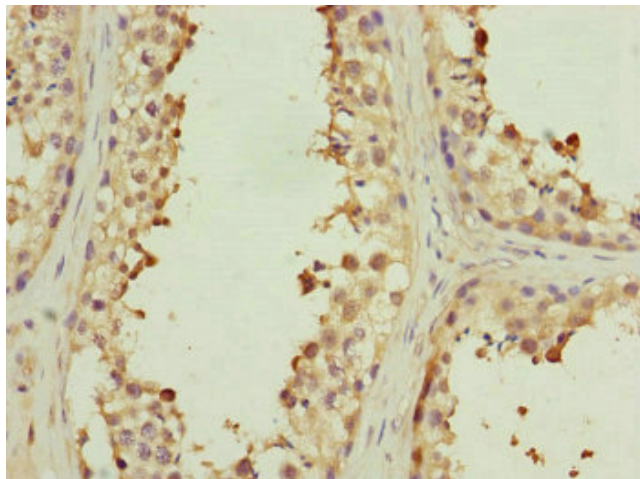
### MYLIP Rabbit Polyclonal Antibody

#### Product data:

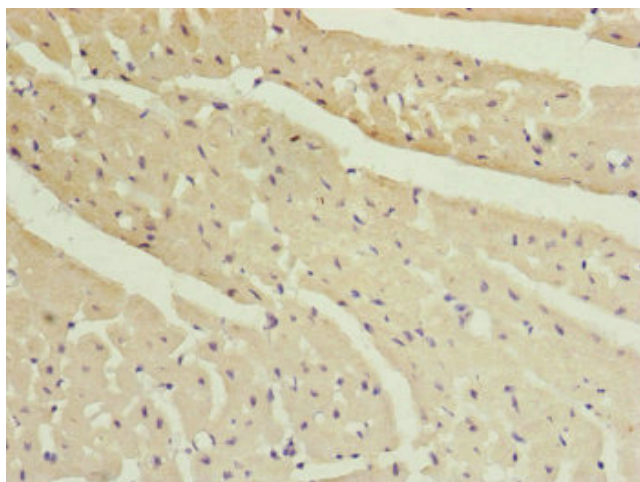
Product Type:	Primary Antibodies
Applications:	IHC, WB
Recommended Dilution:	Recommended dilution: WB:1:1000-1:5000, IHC:1:20-1:200
Reactivity:	Mouse, Human
Host:	Rabbit
Isotype:	IgG
Clonality:	Polyclonal
Immunogen:	Recombinant Human E3 ubiquitin-protein ligase MYLIP protein (266-445AA)
Formulation:	PBS with 0.02% sodium azide, 50% glycerol, pH7.3.
Concentration:	lot specific
Purification:	Antigen Affinity Purified
Conjugation:	Unconjugated
Storage:	Upon receipt, store at -20°C or -80°C. Avoid repeated freeze.
Stability:	1 year from dispatch.
Database Link:	<a href="#">Q8WY64</a>
Background:	E3 ubiquitin-protein ligase that mediates ubiquitination and subsequent proteasomal degradation of myosin regulatory light chain (MRLC), LDLR, VLDLR and LRP8. Activity depends on E2 enzymes of the UBE2D family. Proteasomal degradation of MRLC leads to inhibit neurite outgrowth in presence of NGF by counteracting the stabilization of MRLC by saposin-like protein (CNPY2/MSAP) and reducing CNPY2-stimulated neurite outgrowth. Acts as a sterol-dependent inhibitor of cellular cholesterol uptake by mediating ubiquitination and subsequent degradation of LDLR.



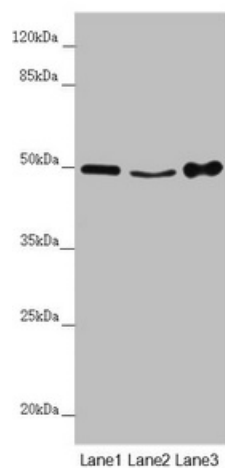
[View online »](#)

**Product images:**

Immunohistochemistry of paraffin-embedded human testis tissue using TA386554 at dilution of 1:100



Immunohistochemistry of paraffin-embedded human heart tissue using TA386554 at dilution of 1:100



#### Western blot

All lanes: MYLIP antibody at 4.06  $\mu\text{g}/\text{ml}$

Lane 1: Mouse brain tissue

Lane 2: Mouse liver tissue

Lane 3: Mouse spleen tissue

Secondary

Goat polyclonal to rabbit IgG at 1/10000 dilution

Predicted band size: 50, 15 kDa

Observed band size: 50 kDa