

## Product datasheet for **TA386551M**

### **ANXA11 Rabbit Polyclonal Antibody**

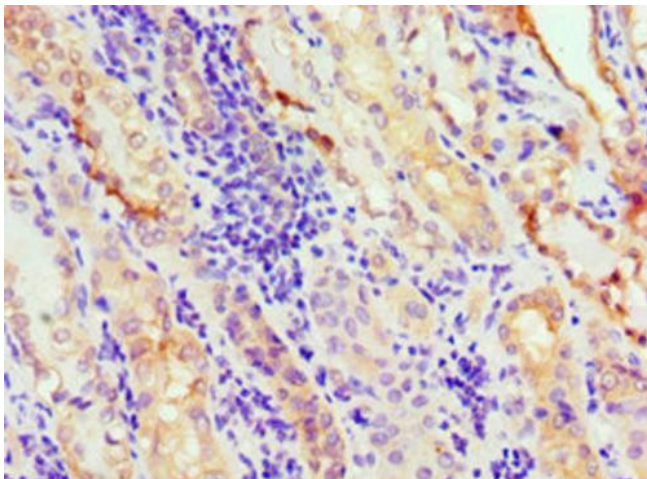
#### **Product data:**

Product Type:	Primary Antibodies
Applications:	IF, IHC, WB
Recommended Dilution:	Recommended dilution: WB:1:500-1:5000, IHC:1:20-1:200, IF:1:50-1:200
Reactivity:	Human
Host:	Rabbit
Isotype:	IgG
Clonality:	Polyclonal
Immunogen:	Recombinant Human Annexin A11 protein (276-505AA)
Formulation:	PBS with 0.02% sodium azide, 50% glycerol, pH7.3.
Concentration:	lot specific
Purification:	Antigen Affinity Purified
Conjugation:	Unconjugated
Storage:	Upon receipt, store at -20°C or -80°C. Avoid repeated freeze.
Stability:	1 year from dispatch.
Database Link:	<a href="#">P50995</a>
Background:	Binds specifically to calyculin in a calcium-dependent manner (By similarity). Required for midbody formation and completion of the terminal phase of cytokinesis.

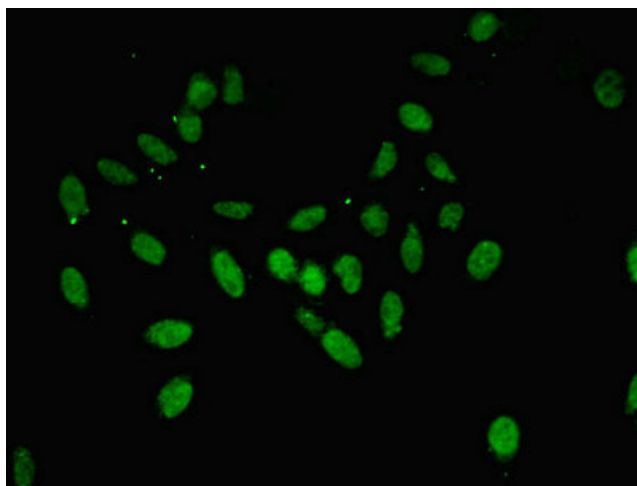


[View online »](#)

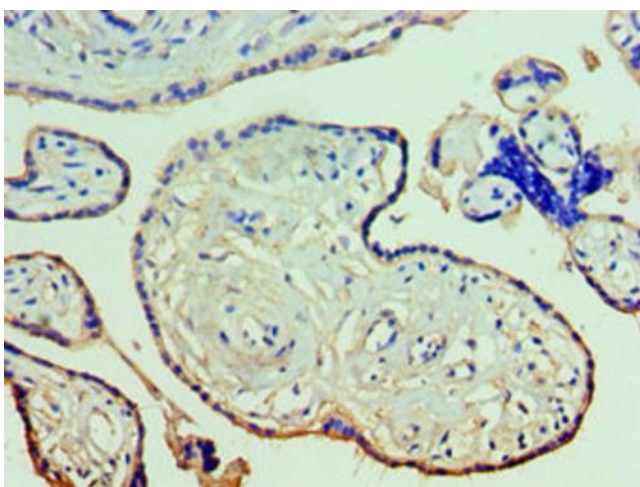
## Product images:



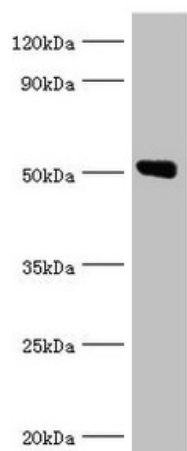
Immunohistochemistry of paraffin-embedded human kidney tissue using [TA386551] at dilution of 1:100



Immunofluorescent analysis of HeLa cells using [TA386551] at dilution of 1:100 and Alexa Fluor 488-conjugated AffiniPure Goat Anti-Rabbit IgG(H+L)



Immunohistochemistry of paraffin-embedded human placenta tissue using [TA386551] at dilution of 1:100



Western blot

All lanes: Annexin A11 antibody at 14µg/ml + U251 whole cell lysate

Secondary

Goat polyclonal to rabbit IgG at 1/10000 dilution

Predicted band size: 55, 52 kDa

Observed band size: 52 kDa