

## Product datasheet for **TA386550**

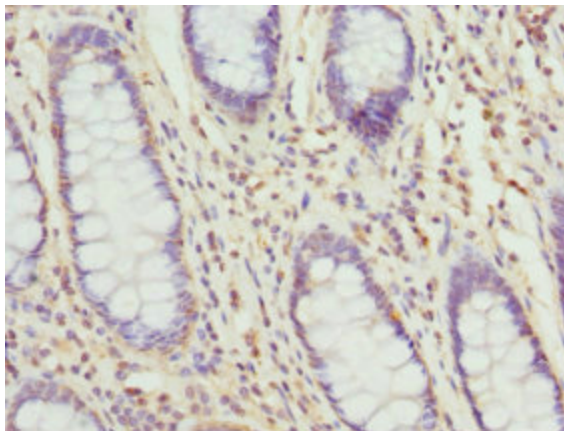
### **TAGLN2 Rabbit Polyclonal Antibody**

#### **Product data:**

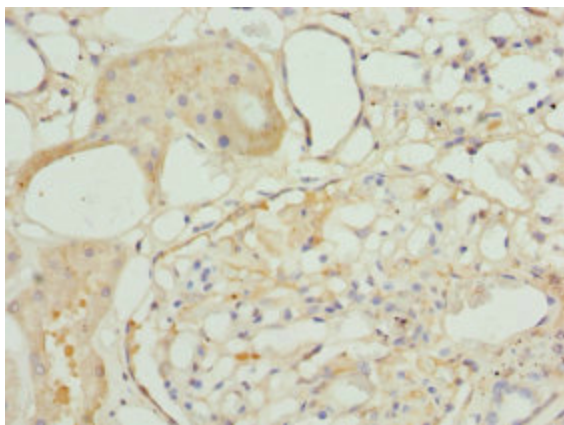
Product Type:	Primary Antibodies
Applications:	IHC, WB
Recommended Dilution:	Recommended dilution: WB:1:1000-1:5000, IHC:1:20-1:200
Reactivity:	Human
Host:	Rabbit
Isotype:	IgG
Clonality:	Polyclonal
Immunogen:	Recombinant Human Transgelin-2 protein (1-199AA)
Formulation:	PBS with 0.02% sodium azide, 50% glycerol, pH7.3.
Concentration:	lot specific
Purification:	Antigen Affinity Purified
Conjugation:	Unconjugated
Storage:	Upon receipt, store at -20°C or -80°C. Avoid repeated freeze.
Stability:	1 year from dispatch.
Database Link:	<a href="#">P37802</a>
Background:	extracellular exosome, vesicle, epithelial cell differentiation



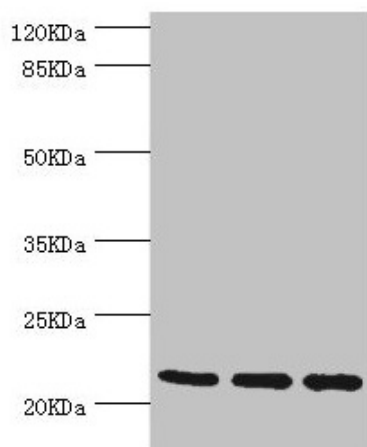
[View online »](#)

**Product images:**

Immunohistochemistry of paraffin-embedded human colon cancer using TA386550 at dilution of 1:100



Immunohistochemistry of paraffin-embedded human kidney tissue using TA386550 at dilution of 1:100



Western blot

All lanes: TAGLN2 antibody at 2.64 $\mu$ g/ml

Lane 1: 293T whole cell lysate

Lane 2: K562 whole cell lysate

Lane 3: MCF-7 whole cell lysate

Secondary

Goat polyclonal to rabbit IgG at 1/10000 dilution

Predicted band size: 23, 25 kDa

Observed band size: 23 kDa