

Product datasheet for **TA386548M**

ETFA Rabbit Polyclonal Antibody

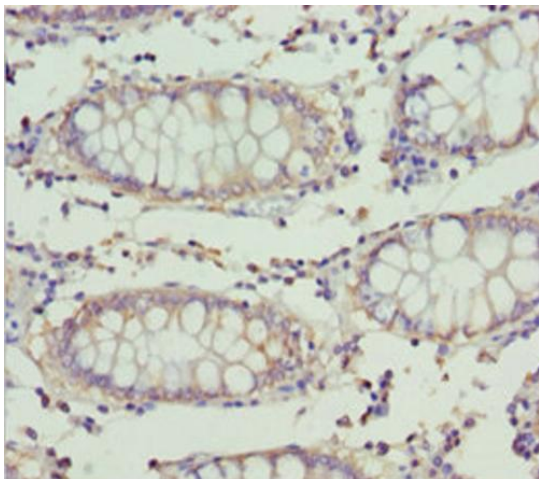
Product data:

Product Type:	Primary Antibodies
Applications:	IHC, WB
Recommended Dilution:	Recommended dilution: WB:1:1000-1:5000, IHC:1:20-1:200
Reactivity:	Mouse, Human
Host:	Rabbit
Isotype:	IgG
Clonality:	Polyclonal
Immunogen:	Recombinant Human Electron transfer flavoprotein subunit alpha, mitochondrial protein (1-333AA)
Formulation:	PBS with 0.02% sodium azide, 50% glycerol, pH7.3.
Concentration:	lot specific
Purification:	Antigen Affinity Purified
Conjugation:	Unconjugated
Storage:	Upon receipt, store at -20°C or -80°C. Avoid repeated freeze.
Stability:	1 year from dispatch.
Database Link:	P13804
Background:	The electron transfer flavoprotein serves as a specific electron acceptor for several dehydrogenases, including five acyl-CoA dehydrogenases, glutaryl-CoA and sarcosine dehydrogenase. It transfers the electrons to the main mitochondrial respiratory chain via ETF-ubiquinone oxidoreductase (ETF dehydrogenase).

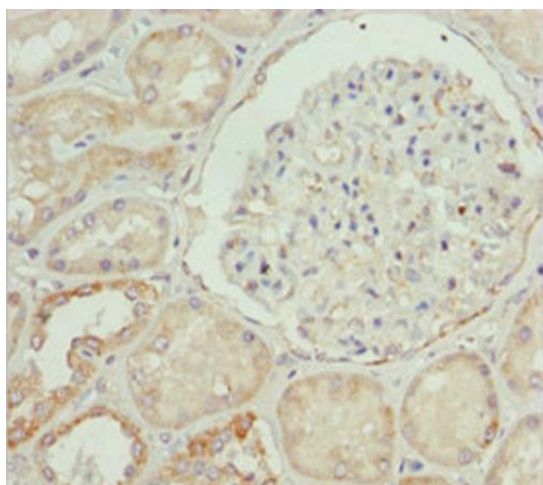


[View online »](#)

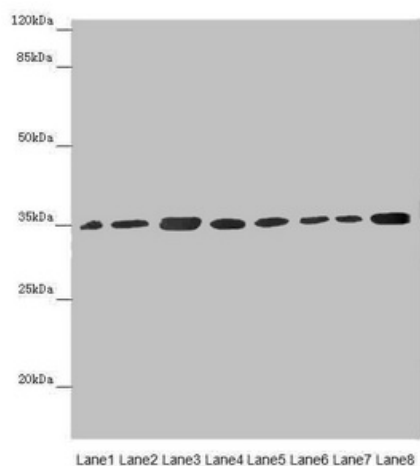
Product images:



Immunohistochemistry of paraffin-embedded human colon cancer using [TA386548] at dilution of 1:100



Immunohistochemistry of paraffin-embedded human kidney tissue using [TA386548] at dilution of 1:100



Western blot

All lanes: ETFA antibody at 2.88µg/ml

Lane 1: Mouse small intestine tissue

Lane 2: Mouse liver tissue

Lane 3: A431 whole cell lysate

Lane 4: Hela whole cell lysate

Lane 5: K562 whole cell lysate

Lane 6: A549 whole cell lysate

Lane 7: HepG2 whole cell lysate

Lane 8: MCF-7 whole cell lysate

Secondary

Goat polyclonal to rabbit IgG at 1/10000 dilution

Predicted band size: 36, 31 kDa

Observed band size: 36 kDa