

Product datasheet for **TA386545M**

NCK2 Rabbit Polyclonal Antibody

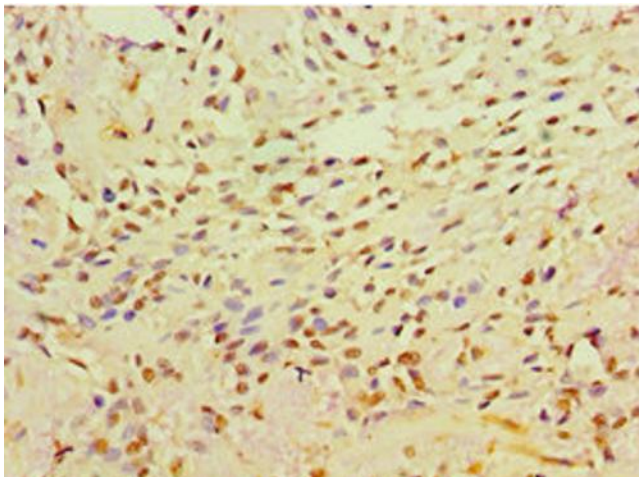
Product data:

Product Type:	Primary Antibodies
Applications:	IHC, WB
Recommended Dilution:	Recommended dilution: WB:1:500-1:2000, IHC:1:20-1:200
Reactivity:	Mouse, Human
Host:	Rabbit
Isotype:	IgG
Clonality:	Polyclonal
Immunogen:	Recombinant Human Cytoplasmic protein NCK2 protein (1-380AA)
Formulation:	PBS with 0.02% sodium azide, 50% glycerol, pH7.3.
Concentration:	lot specific
Purification:	Antigen Affinity Purified
Conjugation:	Unconjugated
Storage:	Upon receipt, store at -20°C or -80°C. Avoid repeated freeze.
Stability:	1 year from dispatch.
Database Link:	O43639
Background:	Adapter protein which associates with tyrosine-phosphorylated growth factor receptors or their cellular substrates. Maintains low levels of EIF2S1 phosphorylation by promoting its dephosphorylation by PP1. Plays a role in ELK1-dependent transcriptional activation in response to activated Ras signaling.

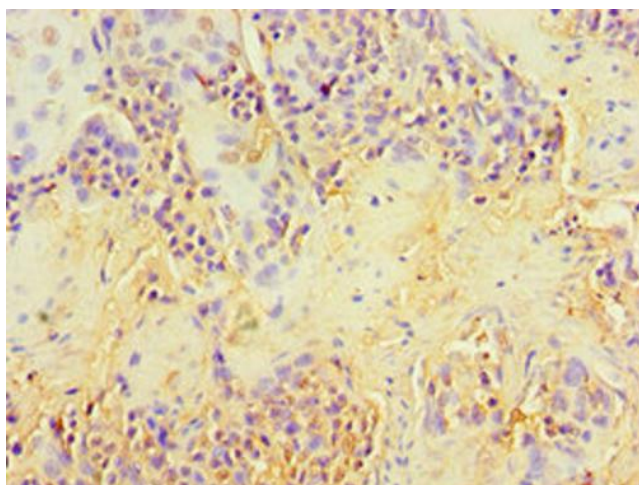


[View online »](#)

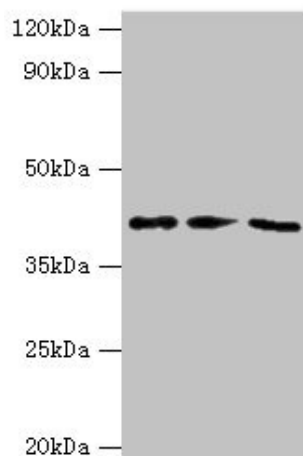
Product images:



Immunohistochemistry of paraffin-embedded human breast cancer using [TA386545] at dilution of 1:100



Immunohistochemistry of paraffin-embedded human tonsil tissue using [TA386545] at dilution of 1:100



Western blot

All lanes: NCK2 antibody at 10 μ g/ml

Lane 1: Mouse spleen tissue

Lane 2: Mouse brain tissue

Lane 3: Mouse kidney tissue

Secondary

Goat polyclonal to rabbit IgG at 1/10000 dilution

Predicted band size: 43 kDa

Observed band size: 43 kDa