

## Product datasheet for **TA386543**

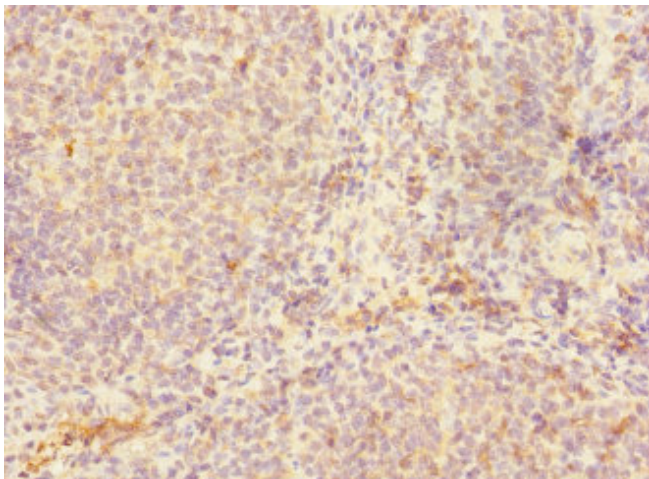
### CD180 Rabbit Polyclonal Antibody

#### Product data:

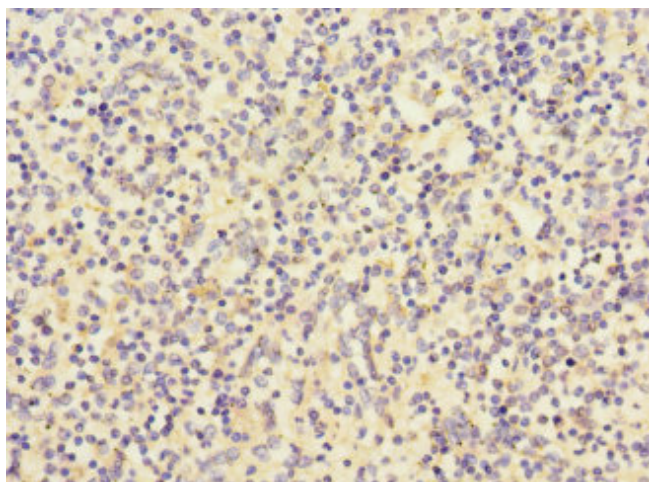
Product Type:	Primary Antibodies
Applications:	IHC, WB
Recommended Dilution:	Recommended dilution: WB:1:1000-1:5000, IHC:1:20-1:200
Reactivity:	Human
Host:	Rabbit
Isotype:	IgG
Clonality:	Polyclonal
Immunogen:	Recombinant Human CD180 antigen protein (24-220AA)
Formulation:	PBS with 0.02% sodium azide, 50% glycerol, pH7.3.
Concentration:	lot specific
Purification:	Antigen Affinity Purified
Conjugation:	Unconjugated
Storage:	Upon receipt, store at -20°C or -80°C. Avoid repeated freeze.
Stability:	1 year from dispatch.
Database Link:	<a href="#">Q99467</a>
Background:	May cooperate with MD-1 and TLR4 to mediate the innate immune response to bacterial lipopolysaccharide (LPS) in B-cells. Leads to NF-kappa-B activation. Also involved in the life/death decision of B-cells (By similarity).



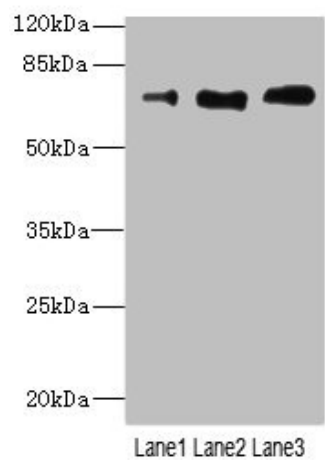
[View online »](#)

**Product images:**

Immunohistochemistry of paraffin-embedded human tonsil tissue using TA386543 at dilution of 1:100



Immunohistochemistry of paraffin-embedded human spleen tissue using TA386543 at dilution of 1:100



Western blot

All lanes: CD180 antibody at 3.95 $\mu$ g/ml

Lane 1: A549 whole cell lysate

Lane 2: A431 whole cell lysate

Lane 3: HepG2 whole cell lysate

Secondary

Goat polyclonal to rabbit IgG at 1/10000 dilution

Predicted band size: 74 kDa

Observed band size: 74 kDa