

## Product datasheet for **TA386541**

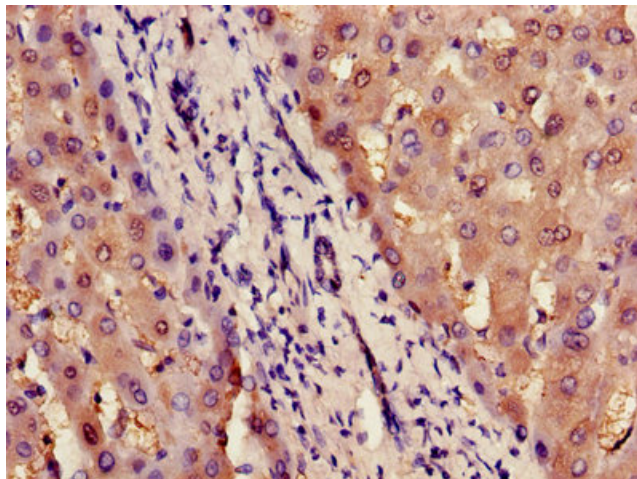
### ILF2 Rabbit Polyclonal Antibody

#### Product data:

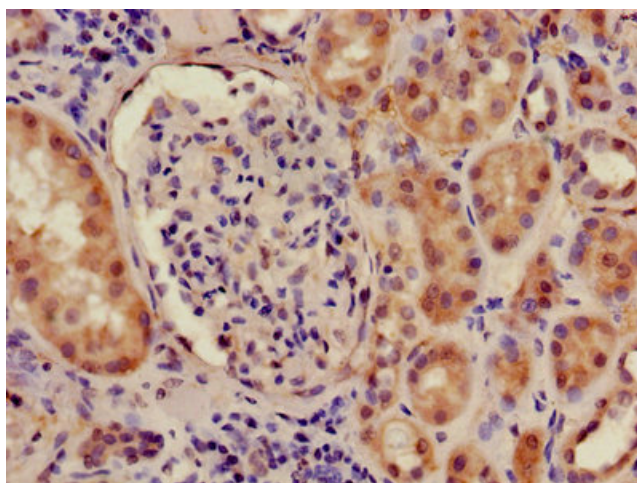
Product Type:	Primary Antibodies
Applications:	IHC, WB
Recommended Dilution:	Recommended dilution: WB:1:1000-1:5000, IHC:1:20-1:200
Reactivity:	Human
Host:	Rabbit
Isotype:	IgG
Clonality:	Polyclonal
Immunogen:	Recombinant Human Interleukin enhancer-binding factor 2 protein (1-390AA)
Formulation:	Preservative: 0.03% Proclin 300 Constituents: 50% Glycerol, 0.01M PBS, PH 7.4
Concentration:	lot specific
Purification:	>95%, Protein G purified
Conjugation:	Unconjugated
Storage:	Upon receipt, store at -20°C or -80°C. Avoid repeated freeze.
Stability:	1 year from dispatch.
Database Link:	<a href="#">Q12905</a>
Background:	EIF3S2 is the largest of the EIFs. It consists of at least 10 nonidentical subunits in mammals. In <i>S. cerevisiae</i> the p39 subunit contains WD repeats; these are thought to mediate protein-protein interactions. The p39 protein appears to be essential for maintaining the integrity of the yeast EIF3 complex. The mammalian EIF3-p36 subunit is homologous to yeast p39.



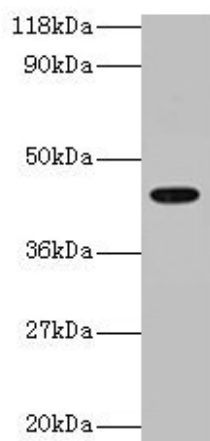
[View online »](#)

**Product images:**

Immunohistochemistry of paraffin-embedded human liver tissue using TA386541 at dilution of 1:100



Immunohistochemistry of paraffin-embedded human kidney tissue using TA386541 at dilution of 1:100



Western blot

All lanes: ILF2 antibody at 2 $\mu$ g/ml + 293T whole cell lysate

Secondary

Goat polyclonal to rabbit IgG at 1/15000 dilution

Predicted band size: 44 kDa

Observed band size: 44 kDa