

## Product datasheet for **TA386535**

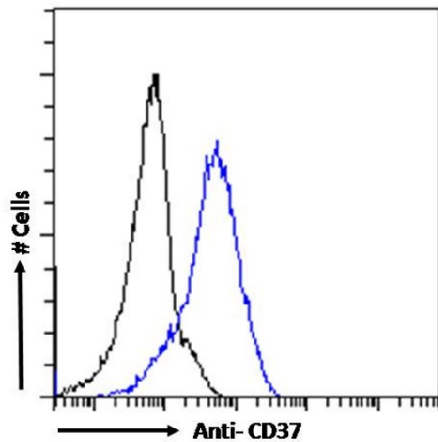
### CD37 Rabbit Monoclonal Antibody [Clone ID: G28-1]

#### Product data:

Product Type:	Primary Antibodies
Clone Name:	G28-1
Reactivity:	Human
Host:	Rabbit
Isotype:	IgG, kappa
Clonality:	Monoclonal
Immunogen:	This antibody was raised by immunizing mice with CD37.
Specificity:	This antibody recognises CD37, which is a cell surface protein, present mostly on mature B cells and B cell malignancies.  G28-1 antibody was used to deplete normal and malignant B cells (Hayden-Ledbetter, unpublished). This antibody and antibody fragments derived therefrom have been used in the research and trials on the generation of novel immunotherapeutic agents, alternative to anti-CD20 therapies (rituximab) (Robak and Robak, 2014).
Formulation:	PBS with 0.02% Proclin 300.
Concentration:	lot specific
Conjugation:	Unconjugated
Storage:	Please store at 4°C for up to 3 months. For longer storage, aliquot and store at -20°C. Avoid freeze and thaw cycles.
Stability:	3 years from dispatch.
Gene Name:	CD37 molecule
Database Link:	<a href="#">Entrez Gene 951 Human P11049</a>
Synonyms:	GP52-40; MGC120234; tetraspanin-26; Tspan-26; TSPAN26
Note:	This chimeric rabbit antibody was made using the variable domain sequences of the original Mouse IgG1 format, for improved compatibility with existing reagents, assays and techniques.



[View online »](#)

**Product images:**

Flow cytometry using the Anti-CD37 antibody G28-1 (TA386535). Paraformaldehyde fixed Daudi cells were stained with anti-unknown specificity antibody ([TA385792]; isotype control, black line) or the rabbit IgG version of G28-1 (TA386535, blue line) at a dilution of 1:100 for 1h at RT. After washing, the bound antibody was detected using a goat anti-rabbit IgG AlexaFluor® 488 antibody at a dilution of 1:1000 and cells analyzed using a FACSCanto flow-cytometer.