

Product datasheet for **TA386517**

Mesothelin (MSLN) Rabbit Monoclonal Antibody [Clone ID: IC14-30]

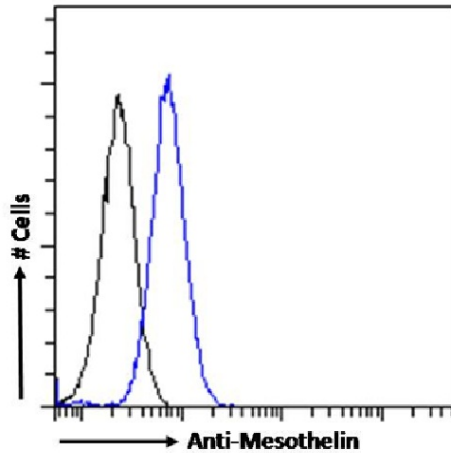
Product data:

Product Type:	Primary Antibodies
Clone Name:	IC14-30
Applications:	ELISA
Reactivity:	Human
Host:	Rabbit
Isotype:	IgG, kappa
Clonality:	Monoclonal
Immunogen:	The original antibody was generated by intraperitoneally immunizing BALB/c mice with the purified recombinant mesothelin protein.
Specificity:	This antibody binds the human mesothelin protein which is highly expressed in many human cancers, including the majority of pancreatic adenocarcinomas, ovarian cancers, and mesotheliomas. This antibody is recommended to be used in combination with mAb 11-25 for detecting mesothelin with high sensitivity in a capture ELISA.
Formulation:	PBS with 0.02% Proclin 300.
Concentration:	lot specific
Conjugation:	Unconjugated
Storage:	Please store at 4°C for up to 3 months. For longer storage, aliquot and store at -20°C. Avoid freeze and thaw cycles.
Stability:	3 years from dispatch.
Gene Name:	mesothelin
Database Link:	Entrez Gene 10232 Human Q13421
Synonyms:	CAK1; mesothelin; MPF; SMR
Note:	This chimeric rabbit antibody was made using the variable domain sequences of the original Mouse IgG1 format, for improved compatibility with existing reagents, assays and techniques.



[View online »](#)

Product images:



Flow cytometry using the Anti-Mesothelin antibody IC14-30 (TA386517). Paraformaldehyde fixed HeLa cells permeabilized with 0.5% Triton were stained with anti-unknown specificity antibody ([TA385792]; isotype control, black line) or the rabbit IgG version of IC14-30 (TA386517, blue line) at a dilution of 1:100 for 1h at RT. After washing, the bound antibody was detected using a goat anti-rabbit IgG AlexaFluor® 488 antibody at a dilution of 1:1000 and cells analyzed using a FACSCanto flow-cytometer.