

## Product datasheet for **TA386479**

### FOXP4 Rabbit Monoclonal Antibody [Clone ID: RAB-S40]

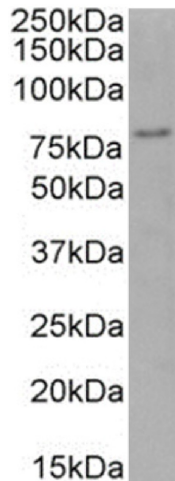
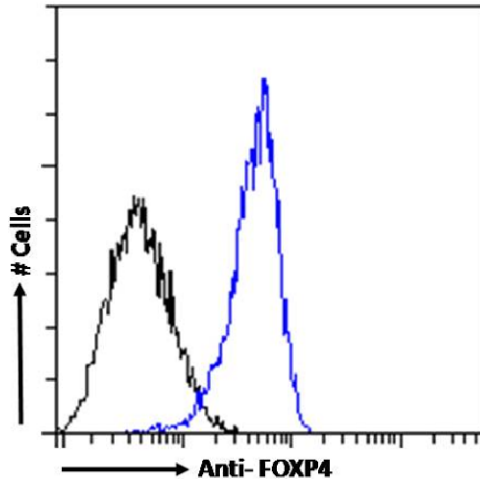
#### Product data:

Product Type:	Primary Antibodies
Clone Name:	RAB-S40
Applications:	ELISA, FC, IF
Reactivity:	Human
Host:	Rabbit
Isotype:	IgG, kappa
Clonality:	Monoclonal
Immunogen:	This antibody was obtained by recombinant antibody (rAb) phage display recognizing FOXP4 protein under non-denaturing conditions.
Specificity:	This antibody recognizes FOXP4 (Forkhead box protein P4). It binds to a folded domain, amino acids 302-541. FOXP4 is a transcriptional repressor that represses lung-specific expression.  This antibody has been used and recommended for the following methods: ELISA; spiked-IP; IF; FC.
Formulation:	PBS with 0.02% Proclin 300.
Concentration:	lot specific
Conjugation:	Unconjugated
Storage:	Please store at 4°C for up to 3 months. For longer storage, aliquot and store at -20°C. Avoid freeze and thaw cycles.
Stability:	3 years from dispatch.
Gene Name:	forkhead box P4
Database Link:	<a href="#">Entrez Gene 116113 Human Q8IVH2</a>
Synonyms:	FKHLA; FLJ40908; FLJ44184; hFKHLA; OTTHUMP00000043536
Note:	This chimeric rabbit antibody was made using the variable domain sequences of the original Human Fab format, for improved compatibility with existing reagents, assays and techniques.



[View online »](#)

## Product images:



Flow cytometry using the anti-FOXP4 antibody RAB-S40 (TA386479). HepG2 cells were fixed using 2% PFA and stained with anti-unknown specificity antibody ([TA385792]; isotype control, black line) or the rabbit IgG1 version of RAB-S40 (TA386479, blue line) at a dilution of 1:100 for 1h at RT. After washing, the bound antibody was detected using a goat anti-rabbit IgG AlexaFluor® 488 antibody at a dilution of 1:1000 and cells analyzed using a FACSCanto flow-cytometer.

Western Blot using anti-FOXP4 antibody RAB-S40 (TA386479) Nuclear lysate of K562 cells (35µg protein in RIPA buffer) was resolved on a SDS PAGE gel and blots were probed with the chimeric rabbit version of RAB-S40 (TA386479) at 0.01 µg/ml before detection using an anti-rabbit secondary antibody. A primary incubation of 1h was used and protein was detected by chemiluminescence.