

Product datasheet for **TA386477**

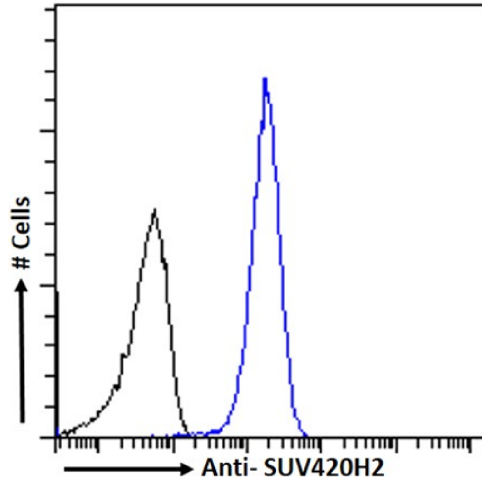
KMT5C Rabbit Monoclonal Antibody [Clone ID: RAB-C409]

Product data:

Product Type:	Primary Antibodies
Clone Name:	RAB-C409
Applications:	ChIP, ELISA
Reactivity:	Human
Host:	Rabbit
Isotype:	IgG, kappa
Clonality:	Monoclonal
Immunogen:	This antibody was obtained by recombinant antibody (rAb) phage display recognizing SUV420H2 protein under non-denaturing conditions.
Specificity:	This antibody recognizes KMT5C (Histone-lysine N-methyltransferase KMT5C). It binds to a folded domain, amino acids 2-248. KMT5C is a histone methyltransferase that regulates transcription and maintenance of genome integrity. This antibody has been used and recommended for the following methods: ELISA; IP-MS; ChIP.
Formulation:	PBS with 0.02% Proclin 300.
Concentration:	lot specific
Conjugation:	Unconjugated
Storage:	Please store at 4°C for up to 3 months. For longer storage, aliquot and store at -20°C. Avoid freeze and thaw cycles.
Stability:	3 years from dispatch.
Gene Name:	lysine methyltransferase 5C
Database Link:	Entrez Gene 84787 Human Q86Y97
Note:	This chimeric rabbit antibody was made using the variable domain sequences of the original Human Fab format, for improved compatibility with existing reagents, assays and techniques.



[View online »](#)

Product images:

Flow cytometry using the anti-SUV420H2 antibody RAB-C409 (TA386477). HeLa cells were fixed using 2% PFA and stained with anti-unknown specificity antibody ([TA385792]; isotype control, black line) or the rabbit IgG1 version of RAB-C409 (TA386477, blue line) at a dilution of 1:100 for 1h at RT. After washing, the bound antibody was detected using a goat anti-rabbit IgG AlexaFluor® 488 antibody at a dilution of 1:1000 and cells analyzed using a FACSCanto flow-cytometer.