

Product datasheet for **TA386475**

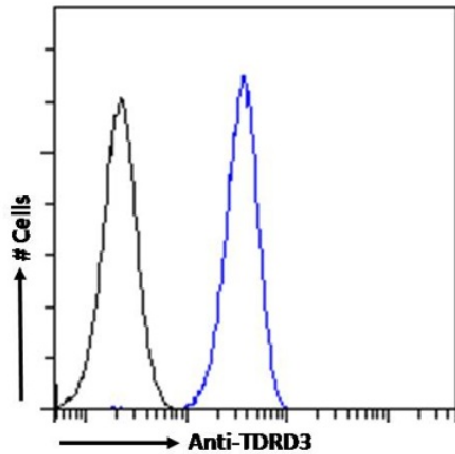
TDRD3 Rabbit Monoclonal Antibody [Clone ID: RAB-C419]

Product data:

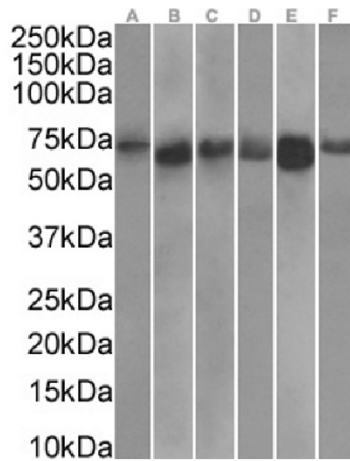
Product Type:	Primary Antibodies
Clone Name:	RAB-C419
Applications:	ChIP, ELISA, IF
Reactivity:	Human
Host:	Rabbit
Isotype:	IgG, kappa
Clonality:	Monoclonal
Immunogen:	This antibody was obtained by recombinant antibody (rAb) phage display recognizing TDRD3 protein under non-denaturing conditions.
Specificity:	<p>This antibody recognizes TDRD3 (Tudor domain-containing protein 3). It binds to a folded domain, amino acids 1-455. TDRD3 is a scaffolding protein that specifically recognizes and binds dimethylarginine-containing proteins.</p> <p>This antibody has been used and recommended for the following methods: ELISA; IF; IP-MS; ChIP.</p>
Formulation:	PBS with 0.02% Proclin 300.
Concentration:	lot specific
Conjugation:	Unconjugated
Storage:	Please store at 4°C for up to 3 months. For longer storage, aliquot and store at -20°C. Avoid freeze and thaw cycles.
Stability:	3 years from dispatch.
Gene Name:	tudor domain containing 3
Database Link:	Entrez Gene 81550 Human Q9H7E2
Synonyms:	4732418C03Rik; 6720468N18
Note:	This chimeric rabbit antibody was made using the variable domain sequences of the original Human Fab format, for improved compatibility with existing reagents, assays and techniques.



[View online »](#)

Product images:


Flow cytometry using the Anti-TDRD3 antibody RAB-C419 (TA386475). Paraformaldehyde fixed HeLa cells permeabilized with 0.5% Triton were stained with anti-unknown specificity antibody ([TA385792]; isotype control, black line) or the rabbit IgG version of RAB-C419 (TA386475, blue line) at a dilution of 1:100 for 1h at RT. After washing, the bound antibody was detected using a goat anti-rabbit IgG AlexaFluor® 488 antibody at a dilution of 1:1000 and cells analyzed using a FACSCanto flow-cytometer.



Western Blot using anti-TDRD3 antibody RAB-C419 (TA386475). Human brain cerebellum(A) (1 µg/ml), human skeletal muscle(B) (0.3 µg/ml), heart(C) (0.3 µg/ml), human placenta(D) (0.1 µg/ml), human testes(E) (0.3 µg/ml) and human kidney(F) (0.1 µg/ml) tissue lysates (35 µg protein in RIPA buffer) were resolved on a SDS PAGE gel and blots were probed with the chimeric rabbit version of RAB-C419 (TA386475) before detection using an anti-rabbit secondary antibody. A primary incubation of 1h was used and protein was detected by chemiluminescence.