

Product datasheet for **TA386473**

SFMBT1 Rabbit Monoclonal Antibody [Clone ID: RAB-C396]

Product data:

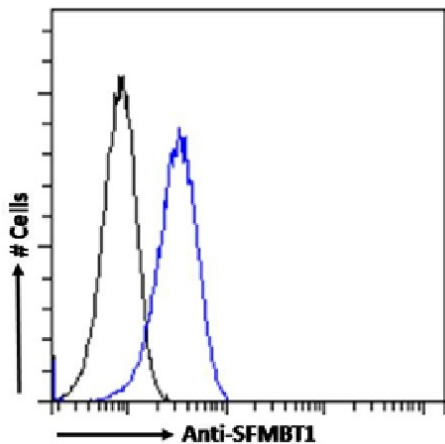
Product Type:	Primary Antibodies
Clone Name:	RAB-C396
Applications:	ChIP, ELISA
Reactivity:	Human
Host:	Rabbit
Isotype:	IgG, kappa
Clonality:	Monoclonal
Immunogen:	This antibody was obtained by recombinant antibody (rAb) phage display recognizing SFMBT1 protein under non-denaturing conditions.
Specificity:	<p>This antibody recognizes SFMBT1 (Scm-like with four MBT domains protein 1). It binds to a folded domain, amino acids 1-455. SFMBT1 is a histone-binding protein, which is part of various corepressor complexes. It mediates the recruitment of corepressor complexes to target genes, followed by chromatin compaction and repression of transcription and plays a role during myogenesis.</p> <p>This antibody has been used and recommended for the following methods: ELISA; IP-MS; ChIP.</p>
Formulation:	PBS with 0.02% Proclin 300.
Concentration:	lot specific
Conjugation:	Unconjugated
Storage:	Please store at 4°C for up to 3 months. For longer storage, aliquot and store at -20°C. Avoid freeze and thaw cycles.
Stability:	3 years from dispatch.
Gene Name:	Scm-like with four mbt domains 1
Database Link:	Entrez Gene 51460 Human Q9UHJ3
Synonyms:	DKFZp434L243; RU1; SFMBT



[View online »](#)

Note: This chimeric rabbit antibody was made using the variable domain sequences of the original Human Fab format, for improved compatibility with existing reagents, assays and techniques.

Product images:



Flow cytometry using the Anti-SFMBT1 antibody RAB-C396 (TA386473). Paraformaldehyde fixed A431 cells permeabilized with 0.5% Triton were stained with anti-unknown specificity antibody ([TA385792]; isotype control, black line) or the rabbit IgG version of RAB-C396 (TA386473, blue line) at a dilution of 1:100 for 1h at RT. After washing, the bound antibody was detected using a goat anti-rabbit IgG AlexaFluor® 488 antibody at a dilution of 1:1000 and cells analyzed using a FACSCanto flow-cytometer.