

Product datasheet for **TA386471**

SETD7 Rabbit Monoclonal Antibody [Clone ID: RAB-C220]

Product data:

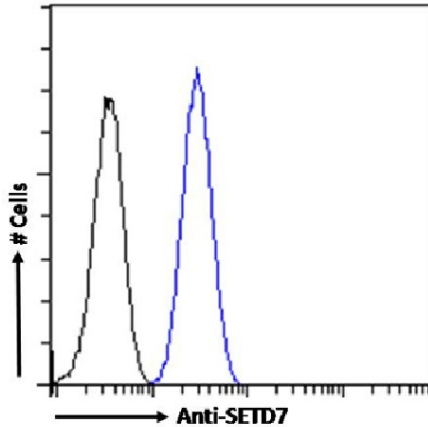
Product Type:	Primary Antibodies
Clone Name:	RAB-C220
Applications:	ChIP, ELISA, FC, IF
Reactivity:	Human
Host:	Rabbit
Isotype:	IgG, kappa
Clonality:	Monoclonal
Immunogen:	This antibody was obtained by recombinant antibody (rAb) phage display recognizing SETD7 protein under non-denaturing conditions.
Specificity:	This antibody recognizes SETD7 (Histone-lysine N-methyltransferase SETD7). It binds to a folded domain, amino acids 2-366. SETD7 is a histone methyltransferase that specifically monomethylates 'Lys-4' of histone H3. H3 'Lys-4' methylation represents a specific tag for epigenetic transcriptional activation. It plays a central role in the transcriptional activation of genes such as collagenase or insulin.
	This antibody has been used and recommended for the following methods: ELISA; IF; spiked IP; IP-MS; ChIP; FC.
Formulation:	PBS with 0.02% Proclin 300.
Concentration:	lot specific
Conjugation:	Unconjugated
Storage:	Please store at 4°C for up to 3 months. For longer storage, aliquot and store at -20°C. Avoid freeze and thaw cycles.
Stability:	3 years from dispatch.
Gene Name:	SET domain containing lysine methyltransferase 7
Database Link:	Entrez Gene 80854 Human Q8WTS6
Synonyms:	FLJ21193; H3-K4-HMTase; KIAA1717; KMT7; SET7; SET7/9; SET9



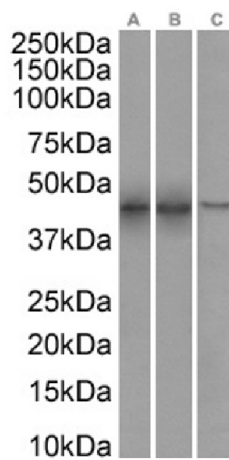
[View online »](#)

Note: This chimeric rabbit antibody was made using the variable domain sequences of the original Human Fab format, for improved compatibility with existing reagents, assays and techniques.

Product images:



Flow cytometry using the Anti-SETD7 antibody RAB-C220 (TA386471). Paraformaldehyde fixed HeLa cells permeabilized with 0.5% Triton were stained with anti-unknown specificity antibody ([TA385792]; isotype control, black line) or the rabbit IgG version of RAB-C220 (TA386471, blue line) at a dilution of 1:100 for 1h at RT. After washing, the bound antibody was detected using a goat anti-rabbit IgG AlexaFluor® 488 antibody at a dilution of 1:1000 and cells analyzed using a FACSCanto flow-cytometer.



Western Blot using anti-SETD7 antibody RAB-C220 (TA386471). Nuclear lysate of MCF7(A) (0.01µg/ml), Jurkat(B) (0.1µg/ml) cells and A549(C) (0.03µg/ml) cell lysates (35µg protein in RIPA buffer) were resolved on a SDS PAGE gel and blots were probed with the chimeric rabbit version of RAB-C220 (TA386471) before detection using an anti-rabbit secondary antibody. A primary incubation of 1h was used and protein was detected by chemiluminescence.