

Product datasheet for **TA386463**

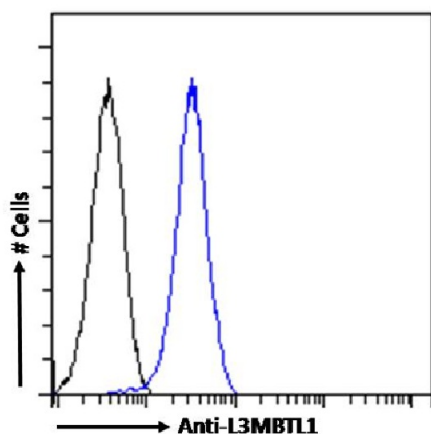
L3MBTL1 Rabbit Monoclonal Antibody [Clone ID: RAB-C213]

Product data:

Product Type:	Primary Antibodies
Clone Name:	RAB-C213
Applications:	ChIP, ELISA, FC, IF
Reactivity:	Human
Host:	Rabbit
Isotype:	IgG, kappa
Clonality:	Monoclonal
Immunogen:	This antibody was obtained by recombinant antibody (rAb) phage display recognizing L3MBTL1 protein under non-denaturing conditions.
Specificity:	<p>This antibody recognizes L3MBTL1 (Lethal(3)malignant brain tumor-like protein 1). It binds to a folded domain, amino acids 200-530. L3MBTL1 is a Polycomb group (PcG) protein that specifically recognizes and binds mono- and dimethyllysine residues on target proteins, thereby acting as a 'reader' of a network of post-translational modifications.</p> <p>This antibody has been used and recommended for the following methods: ELISA; IF; spiked IP; IP-MS; ChIP; FC.</p>
Formulation:	PBS with 0.02% Proclin 300.
Concentration:	lot specific
Conjugation:	Unconjugated
Storage:	Please store at 4°C for up to 3 months. For longer storage, aliquot and store at -20°C. Avoid freeze and thaw cycles.
Stability:	3 years from dispatch.
Gene Name:	l(3)mbt-like 1 (Drosophila)
Database Link:	Entrez Gene 26013 Human Q9Y468
Synonyms:	C630004G01; L3mbtl; mKIAA0681
Note:	This chimeric rabbit antibody was made using the variable domain sequences of the original Human Fab format, for improved compatibility with existing reagents, assays and techniques.



[View online »](#)

Product images:

Flow cytometry using the Anti-L3MBTL1 antibody RAB-C213 (TA386463). Paraformaldehyde fixed Kelly cells permeabilized with 0.5% Triton were stained with anti-unknown specificity antibody ([TA385792]; isotype control, black line) or the rabbit IgG version of RAB-C213 (TA386463, blue line) at a dilution of 1:100 for 1h at RT. After washing, the bound antibody was detected using a goat anti-rabbit IgG AlexaFluor® 488 antibody at a dilution of 1:1000 and cells analyzed using a FACSCanto flow-cytometer.