

## Product datasheet for **TA386461**

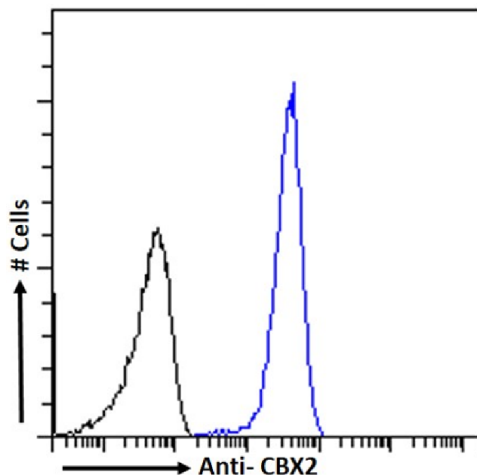
### CBX2 Rabbit Monoclonal Antibody [Clone ID: RAB-C238]

#### Product data:

Product Type:	Primary Antibodies
Clone Name:	RAB-C238
Applications:	ChIP, ELISA, IF
Reactivity:	Human
Host:	Rabbit
Isotype:	IgG, kappa
Clonality:	Monoclonal
Immunogen:	This antibody was obtained by recombinant antibody (rAb) phage display recognizing CBX2 protein under non-denaturing conditions.
Specificity:	<p>This antibody recognizes CBX2 (Chromobox protein homolog 2). It binds to a folded domain, amino acids 2-70. CBX2 is a component of a Polycomb group (PcG) multiprotein PRC1-like complex, a complex class required to maintain the transcriptionally repressive state of many genes, including Hox genes, throughout development.</p> <p>This antibody has been used and recommended for the following methods: ELISA; IF; IP-MS; ChIP.</p>
Formulation:	PBS with 0.02% Proclin 300.
Concentration:	lot specific
Conjugation:	Unconjugated
Storage:	Please store at 4°C for up to 3 months. For longer storage, aliquot and store at -20°C. Avoid freeze and thaw cycles.
Stability:	3 years from dispatch.
Gene Name:	chromobox 2
Database Link:	<a href="#">Entrez Gene 84733 Human Q14781</a>
Synonyms:	CDCA6; M33; MGC10561
Note:	This chimeric rabbit antibody was made using the variable domain sequences of the original Human Fab format, for improved compatibility with existing reagents, assays and techniques.



[View online »](#)

**Product images:**

Flow cytometry using the anti-CBX2 antibody RAB-C238 (TA386461). HeLa cells were fixed using 2% PFA and stained with anti-unknown specificity antibody ([TA385792]; isotype control, black line) or the rabbit IgG1 version of RAB-C238 (TA386461, blue line) at a dilution of 1:100 for 1h at RT. After washing, the bound antibody was detected using a goat anti-rabbit IgG AlexaFluor® 488 antibody at a dilution of 1:1000 and cells analyzed using a FACSCanto flow-cytometer.