

## Product datasheet for **TA386459**

### WDR5 Rabbit Monoclonal Antibody [Clone ID: RAB-C223]

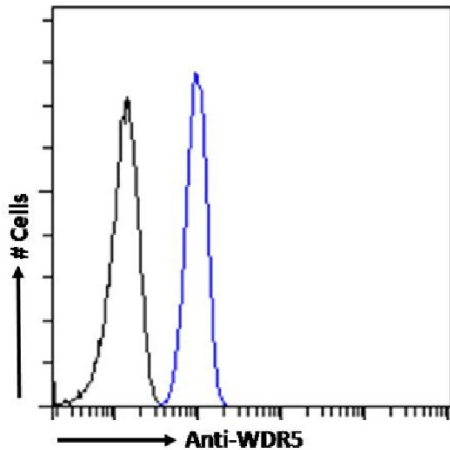
#### Product data:

Product Type:	Primary Antibodies
Clone Name:	RAB-C223
Applications:	ChIP, ELISA, FC, IF
Reactivity:	Human
Host:	Rabbit
Isotype:	IgG, kappa
Clonality:	Monoclonal
Immunogen:	This antibody was obtained by recombinant antibody (rAb) phage display recognizing WDR5 protein under non-denaturing conditions.
Specificity:	This antibody recognizes WDR5 (WD repeat-containing protein 5). It binds to a folded domain, amino acids 1-334. WDR5 is a protein that is involved in histone modification.  This antibody has been used and recommended for the following methods: ELISA; IF; spiked IP; IP-MS; ChIP; FC.
Formulation:	PBS with 0.02% Proclin 300.
Concentration:	lot specific
Conjugation:	Unconjugated
Storage:	Please store at 4°C for up to 3 months. For longer storage, aliquot and store at -20°C. Avoid freeze and thaw cycles.
Stability:	3 years from dispatch.
Gene Name:	WD repeat domain 5
Database Link:	<a href="#">Entrez Gene 11091 Human P61964</a>
Synonyms:	BIG-3; BIG3; SWD3
Note:	This chimeric rabbit antibody was made using the variable domain sequences of the original Human Fab format, for improved compatibility with existing reagents, assays and techniques.

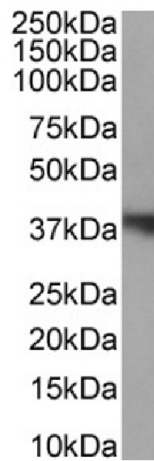


[View online »](#)

**Product images:**



Flow cytometry using the Anti-WDR5 antibody RAB-C223 (TA386459). Paraformaldehyde fixed HeLa cells permeabilized with 0.5% Triton were stained with anti-unknown specificity antibody ([TA385792]; isotype control, black line) or the rabbit IgG version of RAB-C223 (TA386459, blue line) at a dilution of 1:100 for 1h at RT. After washing, the bound antibody was detected using a goat anti-rabbit IgG AlexaFluor® 488 antibody at a dilution of 1:1000 and cells analyzed using a FACSCanto flow-cytometer.



Western Blot using anti-WDR5 antibody RAB-C223 (TA386459). Nuclear lysate of MCF7 cells (35µg protein in RIPA buffer) were resolved on a SDS PAGE gel and blots were probed with the chimeric rabbit version of RAB-C223 (TA386459) at 1 µg/ml before detection using an anti-rabbit secondary antibody. A primary incubation of 1h was used and protein was detected by chemiluminescence.