

Product datasheet for **TA386455**

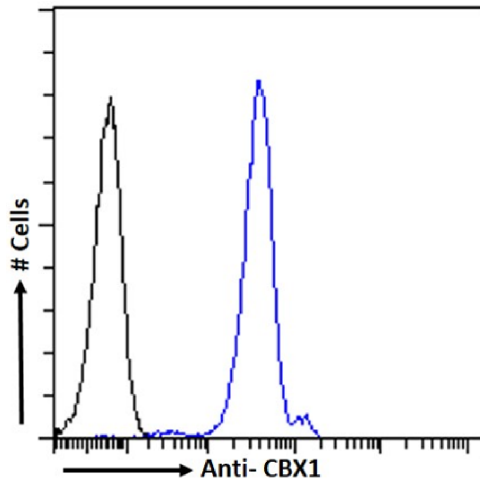
CBX1 Rabbit Monoclonal Antibody [Clone ID: RAB-C145]

Product data:

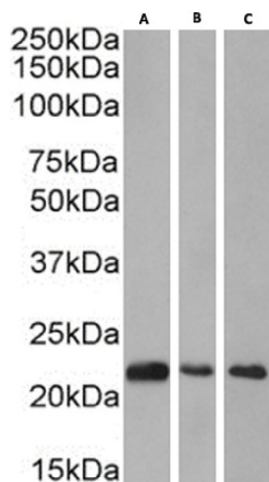
Product Type:	Primary Antibodies
Clone Name:	RAB-C145
Applications:	ChIP, ELISA, IF
Reactivity:	Human
Host:	Rabbit
Isotype:	IgG, kappa
Clonality:	Monoclonal
Immunogen:	This antibody was obtained by recombinant antibody (rAb) phage display recognizing CBX1 protein under non-denaturing conditions.
Specificity:	This antibody recognizes CBX1 (Chromobox protein homolog 1). It binds to a folded domain, amino acids 20-73. CBX1 is a component of heterochromatin. It recognizes and binds histone H3 tails methylated at 'Lys-9', leading to epigenetic repression. This antibody has been used and recommended for the following methods: ELISA; IF; IP-MS; ChIP.
Formulation:	PBS with 0.02% Proclin 300.
Concentration:	lot specific
Conjugation:	Unconjugated
Storage:	Please store at 4°C for up to 3 months. For longer storage, aliquot and store at -20°C. Avoid freeze and thaw cycles.
Stability:	3 years from dispatch.
Gene Name:	chromobox 1
Database Link:	Entrez Gene 10951 Human P83916
Synonyms:	CBX; HP1-BETA; HP1Hs-beta; HP1Hsbeta; M31; MOD1; p25beta
Note:	This chimeric rabbit antibody was made using the variable domain sequences of the original Human Fab format, for improved compatibility with existing reagents, assays and techniques.



[View online »](#)

Product images:


Flow cytometry using the anti-CBX1 antibody RAB-C145 (TA386455). HeLa cells were fixed using 2% PFA and stained with anti-unknown specificity antibody ([TA385792]; isotype control, black line) or the rabbit IgG1 version of RAB-C145 (TA386455, blue line) at a dilution of 1:100 for 1h at RT. After washing, the bound antibody was detected using a goat anti-rabbit IgG AlexaFluor® 488 antibody at a dilution of 1:1000 and cells analyzed using a FACSCanto flow-cytometer.



Western Blot using anti-CBX1 antibody RAB-C145 (TA386455) Nuclear lysates of HeLa(A) (0.3µg/ml), HEK293(B) (0.3µg/ml) and MCF7(C) (0.1 µg/ml) (35µg protein in RIPA buffer) were resolved on a SDS PAGE gel and blots were probed with the chimeric rabbit version of RAB-C145 (TA386455) before detection using an anti-rabbit secondary antibody. A primary incubation of 1h was used and protein was detected by chemiluminescence.