

## Product datasheet for **TA386453**

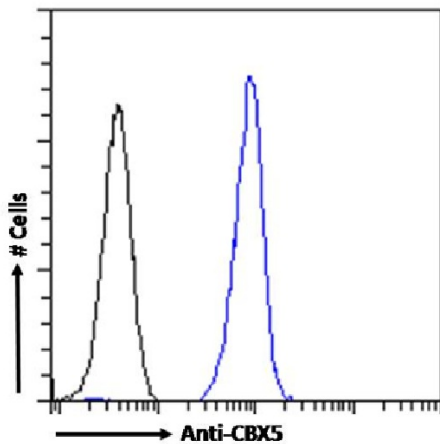
### HP1 alpha (CBX5) Rabbit Monoclonal Antibody [Clone ID: RAB-C133]

#### Product data:

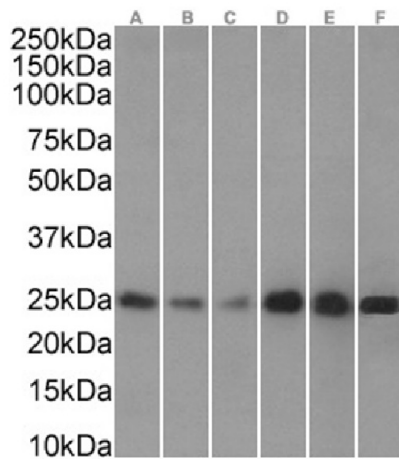
Product Type:	Primary Antibodies
Clone Name:	RAB-C133
Applications:	ChIP, ELISA
Reactivity:	Human
Host:	Rabbit
Isotype:	IgG, kappa
Clonality:	Monoclonal
Immunogen:	This antibody was obtained by recombinant antibody (rAb) phage display recognizing CBX5 protein under non-denaturing conditions.
Specificity:	<p>This antibody recognizes CBX5 (Chromobox protein homolog 5). It binds to a folded domain, amino acids 18-75. CBX5 is a component of heterochromatin that recognizes and binds histone H3 tails methylated at 'Lys-9' (H3K9me), leading to epigenetic repression.</p> <p>This antibody has been used and recommended for the following methods: ELISA; IP-MS; ChIP.</p>
Formulation:	PBS with 0.02% Proclin 300.
Concentration:	lot specific
Conjugation:	Unconjugated
Storage:	Please store at 4°C for up to 3 months. For longer storage, aliquot and store at -20°C. Avoid freeze and thaw cycles.
Stability:	3 years from dispatch.
Gene Name:	chromobox 5
Database Link:	<a href="#">Entrez Gene 23468 Human P45973</a>
Synonyms:	HP1; HP1-ALPHA; HP1A; HP1Hs-alpha
Note:	This chimeric rabbit antibody was made using the variable domain sequences of the original Human Fab format, for improved compatibility with existing reagents, assays and techniques.



[View online »](#)

**Product images:**


Flow cytometry using the Anti-CBX5 antibody RAB-C133 (TA386453). Paraformaldehyde fixed HeLa cells permeabilized with 0.5% Triton were stained with anti-unknown specificity antibody ([TA385792]; isotype control, black line) or the rabbit IgG version of RAB-C133 (TA386453, blue line) at a dilution of 1:100 for 1h at RT. After washing, the bound antibody was detected using a goat anti-rabbit IgG AlexaFluor® 488 antibody at a dilution of 1:1000 and cells analyzed using a FACSCanto flow-cytometer.



Western Blot using anti-CBX5 antibody RAB-C133 (TA386453). Nuclear lysates of HeLa(A), HEK293(B), A431(C), MCF7(D), Jurkat(E) and K562(F) cells (35µg protein in RIPA buffer) were resolved on a SDS PAGE gel and blots were probed with the chimeric rabbit version of RAB-C133 (TA386453) at 0.003 µg/ml before detection using an anti-rabbit secondary antibody. A primary incubation of 1h was used and protein was detected by chemiluminescence.