

Product datasheet for **TA386439**

B7-1 (CD80) Rabbit Monoclonal Antibody [Clone ID: 16C10]

Product data:

Product Type:	Primary Antibodies
Clone Name:	16C10
Applications:	ELISA
Reactivity:	Human
Host:	Rabbit
Clonality:	Monoclonal
Immunogen:	This antibody was generated by immunization of cynomolgus monkeys with human B7.1 antigen.
Specificity:	This antibody binds human CD80 and inhibits the B7.1:CD28 pathway.

This antibody can be used for identification of human B7.1 antigen and is capable of inhibiting the binding of B7.1 to CD28, however it does not block the binding of B7.1 to CTLA-4. This antibody further inhibits the production of IL-2. Blocking of the primary activation signal between CD28 and B7.1 (CD80) with these antibodies while allowing the unimpaired or coincident interaction of CTLA-4 and B7.1 represents a combined antagonistic effect on positive co-stimulation with an agonistic effect on negative signaling. The binding of the antibody to soluble B7.1 was tested using ELISA. This antibody tested positive for binding to human C1q protein. This antibody is reported to cause keratinocyte hyperproliferation and decrease in psoriasis by inhibiting the B7:CD28 pathway. This antibody is further reported to be useful for the treatment of intestinal inflammation and rheumatoid arthritis.

Formulation:	PBS with 0.02% Proclin 300.
Concentration:	lot specific
Conjugation:	Unconjugated
Storage:	Please store at 4°C for up to 3 months. For longer storage, aliquot and store at -20°C. Avoid freeze and thaw cycles.
Stability:	3 years from dispatch.
Gene Name:	CD80 molecule
Database Link:	Entrez Gene 941 Human P33681

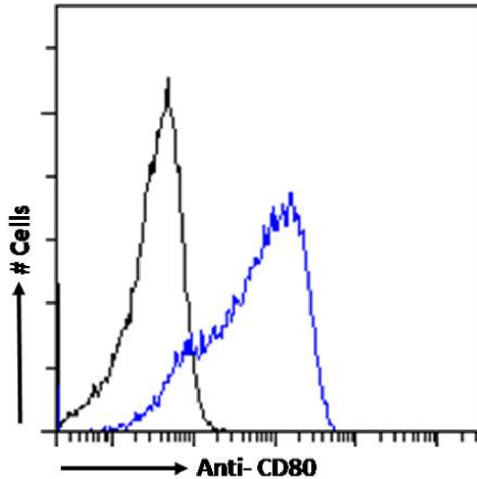


[View online »](#)

Synonyms: B7; BB1; CD28LG; CD28LG1; LAB7

Note: This chimeric rabbit antibody was made using the variable domain sequences of the original IgG1 format, for improved compatibility with existing reagents, assays and techniques.

Product images:



Flow cytometry using the anti-CD80 antibody 16C10 (TA386439). Daudi cells were fixed using 2% PFA and stained with anti-unknown specificity antibody ([TA385792]; isotype control, black line) or the rabbit IgG1 version of 16C10 (TA386439, blue line) at a dilution of 1:100 for 1h at RT. After washing, the bound antibody was detected using a goat anti-rabbit IgG AlexaFluor® 488 antibody at a dilution of 1:1000 and cells analyzed using a FACSCanto flow-cytometer.