

Product datasheet for TA386434

CD40L (CD40LG) Rabbit Monoclonal Antibody [Clone ID: chi220]

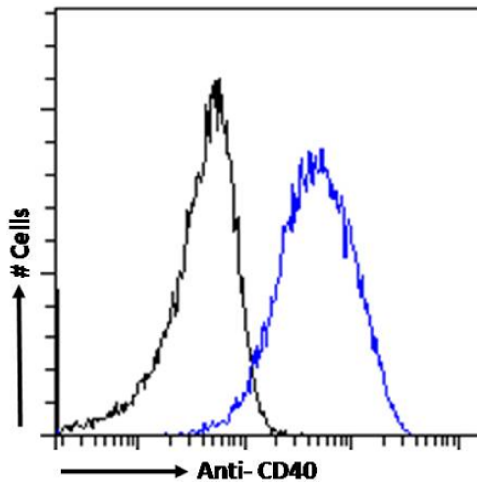
Product data:

Product Type:	Primary Antibodies
Clone Name:	chi220
Applications:	BI
Reactivity:	Human
Host:	Rabbit
Isotype:	IgG, kappa
Clonality:	Monoclonal
Immunogen:	This antibody was generated by immunizing female BALB/c mice with a fusion protein containing extracellular domain of human CD40 fused to the hinge CH2 and CH3 domains of a murine IgG2b antibody.
Specificity:	<p>This antibody binds the CD40 and blocks the humoral immune responses to T cell dependent antigens in a dose dependent manner.</p> <p>This antibody blocks the interaction between CD40 and gp39. Chi220 was used either alone or in combination with CTLA4-Ig in an immunosuppressive therapy study to check the survival of renal allografts in non human primate models (PMID: 12394833). Chi220 blocks binding of CD154, it also has partial agonist properties and weak stimulatory potential. It synergistically works with LEA29Y (belatacept) to prolong the islet allograft survival in a non-human primate Macaca fascicularis (PMID: 15611281). A study on protection of islets xenographs in diabetic macaques used a combination of Chi220 with IL-2 receptor specific antibody Basiliximab for immunosuppression with induction therapy. Chi220 is used as an sCD154 blocking agent and it was seen that it binds sCD154 in a dose dependant manner (PMID: 21920020). Two humanized versions of this antibody were generated F4 and L3.17, also showed similar properties. Humanized versions of this antibody are available on request.</p>
Formulation:	PBS with 0.02% Proclin 300.
Concentration:	lot specific
Conjugation:	Unconjugated
Storage:	Please store at 4°C for up to 3 months. For longer storage, aliquot and store at -20°C. Avoid freeze and thaw cycles.


[View online »](#)

Stability:	3 years from dispatch.
Gene Name:	CD40 ligand
Database Link:	Entrez Gene 959 Human P29965
Synonyms:	CD40-L; CD40L; CD154; gp39; hCD40L; HIGM1; IGM; IMD3; T-BAM; TNFSF5; TRAP
Note:	This chimeric rabbit antibody was made using the variable domain sequences of the original Mouse IgG2a format, for improved compatibility with existing reagents, assays and techniques.

Product images:



Flow cytometry using the anti-CD40 antibody chi220 (TA386434). Daudi cells were fixed using 2% PFA and stained with anti-unknown specificity antibody ([TA385792]; isotype control, black line) or the rabbit IgG1 version of chi220 (TA386434, blue line) at a dilution of 1:100 for 1h at RT. After washing, the bound antibody was detected using a goat anti-rabbit IgG AlexaFluor® 488 antibody at a dilution of 1:1000 and cells analyzed using a FACSCanto flow-cytometer.