

## Product datasheet for **TA386432**

### **DHLAG (CD74) Rabbit Monoclonal Antibody [Clone ID: LL1 (EPB1)]**

#### **Product data:**

<b>Product Type:</b>	Primary Antibodies
<b>Clone Name:</b>	LL1 (EPB1)
<b>Applications:</b>	FC, IP, WB
<b>Reactivity:</b>	Human
<b>Host:</b>	Rabbit
<b>Isotype:</b>	IgG, kappa
<b>Clonality:</b>	Monoclonal
<b>Immunogen:</b>	This antibody was generated by immunizing female BALB/c mice with whole Raji cells or a crude membrane preparation.
<b>Specificity:</b>	This antibody reacts with the cell surface epitope of the invariant chain (Ii) subunit of the immature MHC class-II antigen CD74.

Radioimmunobinding and flow cytometric analysis was used to analyse binding of LL1 to peripheral blood. LL1 did not react with T cell lines nor with normal diploid cells. The reactivity of LL1 (EB-1) to the tumor cells was checked using a live cell indirect immunofluorescence staining assay. LL1 stained positive for cell lines Raji (maxilla), Daudi (B-lymphoblast), RAMOS (b-lymphocyte), SU-DHL-7, ARH-77 (plasma cell leukemia), HS-Sultan (plasmacytoma). LL1 is reported to recognize most of the small and large lymphocytes of the germinal centre and no reactivity to marginal zone B-cells. It is also reported to react with interdigitating histiocytes of the T-cell zones. It was further reported that LL1 bound positively to Western blotted Raji cell antigens (PMID: 2663143). The specificity of LL1 for Ii subunit was determined by immunoprecipitation. Radiolabelled antibodies were used for internalization and catabolism of the antibody and it was seen that LL1 was internalized and catabolized very quickly as compared to some other antibodies like those which are specific for CD19, CD22 and anti-transferrin receptor. (PMID: 8947500). LL1 was evaluated to be a potential candidate for bone marrow imaging using Tcm labelled LL1 sulphur colloid imaging. (PMID: 9076770)

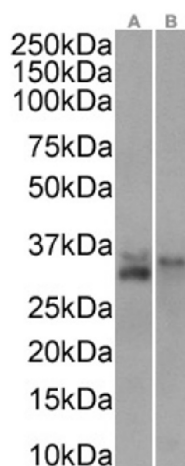
<b>Formulation:</b>	PBS with 0.02% Proclin 300.
<b>Concentration:</b>	lot specific
<b>Conjugation:</b>	Unconjugated



[View online »](#)

<b>Storage:</b>	Please store at 4°C for up to 3 months. For longer storage, aliquot and store at -20°C. Avoid freeze and thaw cycles.
<b>Stability:</b>	3 years from dispatch.
<b>Gene Name:</b>	CD74 molecule
<b>Database Link:</b>	<a href="#">Entrez Gene 972 Human P04233</a>
<b>Synonyms:</b>	DHLA G; HLA-DR-gamma; HLADG; Ia-GAMMA; li; p33
<b>Note:</b>	This chimeric rabbit antibody was made using the variable domain sequences of the original Mouse IgG1 format, for improved compatibility with existing reagents, assays and techniques.

### Product images:



Western Blot using anti-CD74 antibody LL1 (EPB1) (TA386432). Human spleen(A) (0.01 µg/ml) and human tonsil(B) (0.05 µg/ml) tissue lysates (35 µg protein in RIPA buffer) were resolved on a SDS PAGE gel and blots were probed with the chimeric rabbit version of LL1 (EPB1) (TA386432) before detection using an anti-rabbit secondary antibody. A primary incubation of 1h was used and protein was detected by chemiluminescence.