

## Product datasheet for **TA386402**

### CCR9 Rabbit Monoclonal Antibody [Clone ID: 9B1]

#### Product data:

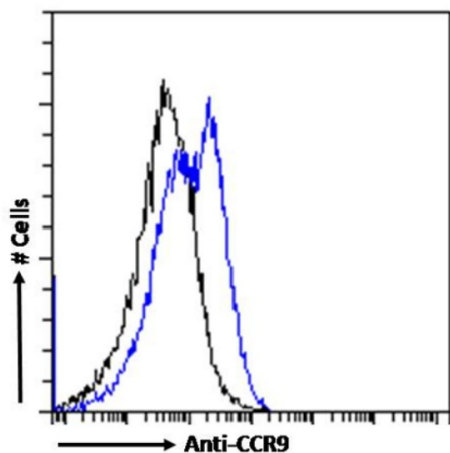
Product Type:	Primary Antibodies
Clone Name:	9B1
Applications:	FC, Neutralize
Reactivity:	Mouse
Host:	Rabbit
Isotype:	IgG, kappa
Clonality:	Monoclonal
Immunogen:	This antibody was raised by immunizing rats with KLH-conjugated linear peptide corresponding to the N-terminus of mouse CCR9.
Specificity:	<p>9B1 antibody recognizes CCR9 at the N-terminus. CCR9 is a member of the G protein coupled receptor family and is involved in T cell development in the thymus and in gut-associated immune response. Mouse CCR9 is highly expressed on different stages of thymocytes and upregulated on CD4+CD8+ cells.</p> <p>This antibody is recommended for the detection and analysis of CCR9 via flow cytometry (Farazuddin et al., 2019). Furthermore, it was demonstrated that this 9B1 antibody was capable of neutralizing CCR9 function, as it inhibited CCL25-induced calcium mobilization in L1.2-CCR9 cells (Rivera-Nieves et al., 2006).</p>
Formulation:	PBS with 0.02% Proclin 300.
Concentration:	lot specific
Conjugation:	Unconjugated
Storage:	Please store at 4°C for up to 3 months. For longer storage, aliquot and store at -20°C. Avoid freeze and thaw cycles.
Stability:	3 years from dispatch.
Gene Name:	chemokine (C-C motif) receptor 9
Database Link:	<a href="#">Entrez Gene 12769 Mouse Q9WUT7</a>
Synonyms:	CC-CKR-9; CCR-9; CDw199; CMKBR9; GPR-9-6; GPR28



[View online »](#)

**Note:** This chimeric rabbit antibody was made using the variable domain sequences of the original Rat IgG2a format, for improved compatibility with existing reagents, assays and techniques.

**Product images:**



Flow cytometry using the Anti-CCR9 antibody 9B1 (TA386402). Paraformaldehyde fixed mouse splenocytes were stained with anti-unknown specificity antibody ([TA385792]; isotype control, black line) or the rabbit IgG version of 9B1 (TA386402, blue line) at a dilution of 1:100 for 1h at RT. After washing, the bound antibody was detected using a goat anti-rabbit IgG AlexaFluor® 488 antibody at a dilution of 1:1000 and cells analyzed using a FACSCanto flow-cytometer.