

Product datasheet for **TA386401**

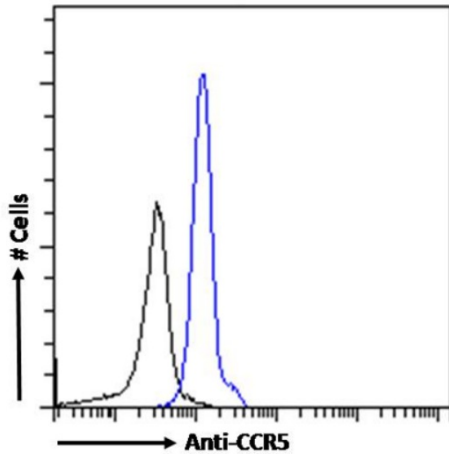
CCR5 Rabbit Monoclonal Antibody [Clone ID: RC-10]

Product data:

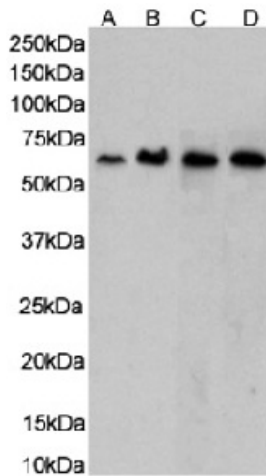
Product Type:	Primary Antibodies
Clone Name:	RC-10
Applications:	ELISA, IF, WB
Reactivity:	Human
Host:	Rabbit
Isotype:	IgG, kappa
Clonality:	Monoclonal
Immunogen:	This antibody was raised by immunizing mice with CCR5.
Specificity:	This antibody recognizes non-activated nonphospho-CCR5. CCR5 is a receptor for a number of inflammatory CC-chemokines including CCL3/MIP-1-alpha, CCL4/MIP-1-beta and RANTES. This antibody is recommended for the detection and analysis of CCR5 via immunofluorescence and Western blot.
Formulation:	PBS with 0.02% Proclin 300.
Concentration:	lot specific
Conjugation:	Unconjugated
Storage:	Please store at 4°C for up to 3 months. For longer storage, aliquot and store at -20°C. Avoid freeze and thaw cycles.
Stability:	3 years from dispatch.
Gene Name:	C-C motif chemokine receptor 5 (gene/pseudogene)
Database Link:	Entrez Gene 1234 Human P51681
Synonyms:	CC-CKR-5; CCCKR5; CCR-5; CD195; chemr13; CKR-5; CKR5; CMKBR5; FLJ78003; IDDM22; OTTHUMP00000209784
Note:	This chimeric rabbit antibody was made using the variable domain sequences of the original Mouse IgG1 format, for improved compatibility with existing reagents, assays and techniques.



[View online »](#)

Product images:


Flow cytometry using the Anti-CCR5 (PKC site) antibody RC-10 (TA386401). Paraformaldehyde fixed human peripheral blood monocytes permeabilized with 0.5% Triton were stained with anti-unknown specificity antibody ([TA385792]; isotype control, black line) or the rabbit IgG version of RC-10 (TA386401, blue line) at a dilution of 1:100 for 1h at RT. After washing, the bound antibody was detected using a goat anti-rabbit IgG AlexaFluor® 488 antibody at a dilution of 1:1000 and cells analyzed using a FACSCanto flow-cytometer.



Western Blot using anti-CCR5 (PKC site) antibody RC-10 (TA386401) Jurkat (A), Molt4 (B), K562 (C) and Daudi (D) cell lysates (35µg protein in RIPA buffer) were resolved on a SDS PAGE gel and blots were probed with the chimeric rabbit version of RC-10 (TA386401) at 0.0003 µg/ml, 0.001 µg/ml, 0.003 µg/ml and unknown µg/ml, respectively, before detection using an anti-rabbit secondary antibody. A primary incubation of 1h was used and protein was detected by chemiluminescence.