

Product datasheet for **TA386398**

CCR5 Rabbit Monoclonal Antibody [Clone ID: V14/2]

Product data:

Product Type:	Primary Antibodies
Clone Name:	V14/2
Applications:	ELISA, FC, IF, IP, WB
Reactivity:	Human
Host:	Rabbit
Isotype:	IgG, kappa
Clonality:	Monoclonal
Immunogen:	This antibody was raised by immunizing mice with a synthetic phospho peptide corresponding to the C-Terminal region of human CCR5 conjugated to BSA.
Specificity:	V14/2 antibody has been demonstrated to exclusively recognise CCR5 (CD195) phosphorylated at Ser 337.

The V14/2 antibody is recommended for the specific detection and analysis of CCR5 phosphorylated on serine 337 (Pollok-Kopp et al., 2003). It was used in the detection of pS337 CCR5 in lysates of RBL-2H3 cells via Western blot (Pollok-Kopp et al., 2003). With other anti-CCR5 antibodies which react with nonphosphorylated CCR5 (Ab01577) or CCR5 phosphorylated on different serine residues (Ab01578), it can be used to study dynamic regulation of CCR5 and of phosphorylation mechanisms.

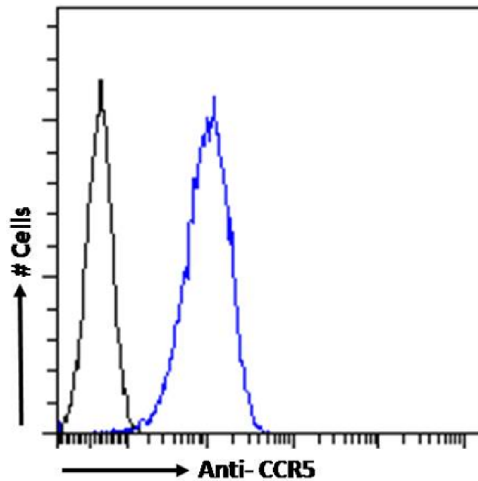
Formulation:	PBS with 0.02% Proclin 300.
Concentration:	lot specific
Conjugation:	Unconjugated
Storage:	Please store at 4°C for up to 3 months. For longer storage, aliquot and store at -20°C. Avoid freeze and thaw cycles.
Stability:	3 years from dispatch.
Gene Name:	C-C motif chemokine receptor 5 (gene/pseudogene)
Database Link:	Entrez Gene 1234 Human P51681

[View online »](#)

Synonyms: CC-CKR-5; CCKR5; CCR-5; CD195; chemr13; CKR-5; KCR5; CMKBR5; FLJ78003; IDDM22; OTTHUMP00000209784

Note: This chimeric rabbit antibody was made using the variable domain sequences of the original Mouse IgG2b format, for improved compatibility with existing reagents, assays and techniques.

Product images:



Flow cytometry using the anti-CCR5 (phosphoserine 349) antibody E11/19 (TA386398). U937 cells were fixed using 2% PFA and stained with anti-unknown specificity antibody ([TA385792]; isotype control, black line) or the rabbit IgG1 version of E11/19 (TA386398, blue line) at a dilution of 1:100 for 1h at RT. After washing, the bound antibody was detected using a goat anti-rabbit IgG AlexaFluor® 488 antibody at a dilution of 1:1000 and cells analyzed using a FACSCanto flow-cytometer.



Western Blot using anti-CCR5 (phosphoserine 337) antibody V14/2 (TA386398) K562 cell lysate (35µg protein in RIPA buffer) was resolved on a SDS PAGE gel and blots were probed with the chimeric rabbit version of V14/2 (TA386398) at 2µg/ml before detection using an anti-rabbit secondary antibody. A primary incubation of 1h was used and protein was detected by chemiluminescence.