

## Product datasheet for **TA386397**

### CCR5 Rabbit Monoclonal Antibody [Clone ID: E11/19]

#### Product data:

|                |   |
|----------------|---|
| Product Type:  | Primary Antibodies  |
| Clone Name:    | E11/19  |
| Applications:  | ELISA, IF, IP, WB   |
| Reactivity:    | Human   |
| Host:          | Rabbit  |
| Isotype:       | IgG, kappa  |
| Clonality:     | Monoclonal  |
| Immunogen:     | This antibody was raised by immunizing mice with a synthetic phosphopeptide (CEAPER(pS)(pS)VYTR(pS)TGEQI(pS)VGL) corresponding to the C-terminal region of human CCR5.  |
| Specificity:   | <p>The E11/19 monoclonal antibody binds to phosphoserine 349 corresponding to 22 c-terminal amino acid residue of human CCR5. CCR5 is a receptor for a number of inflammatory CC-chemokines including CCL3/MIP-1-alpha, CCL4/MIP-1-beta and RANTES.</p> <p>The E11/19 antibody is recommended for flow cytometric analysis, immunoblotting, and ELISA assay of CCR5 expression. It was also successfully utilized in the immunoprecipitation of CCR5 (Venuti et al., 2016). This antibody was demonstrated to detect pS349 CCR5 via Western blot when it was first activated to its phosphorylated form (Pollok-Kopp et al., 2003). Furthermore, E11/19 antibody was used to identify the localization of pS349 CCR5 in RBL cells via immunofluorescence (Pollok-Kopp et al., 2003). With other anti-CCR5 antibodies which react with nonphosphorylated CCR5 (Ab01577) or CCR5 phosphorylated on different serine residues (Ab01579), it can be used to study dynamic regulation of CCR5 and of phosphorylation mechanisms.</p> |
| Formulation:   | PBS with 0.02% Proclin 300.   |
| Concentration: | lot specific  |
| Conjugation:   | Unconjugated  |
| Storage:       | Please store at 4°C for up to 3 months. For longer storage, aliquot and store at -20°C. Avoid freeze and thaw cycles.   |
| Stability:     | 3 years from dispatch.  |
| Gene Name:     | C-C motif chemokine receptor 5 (gene/pseudogene)  |



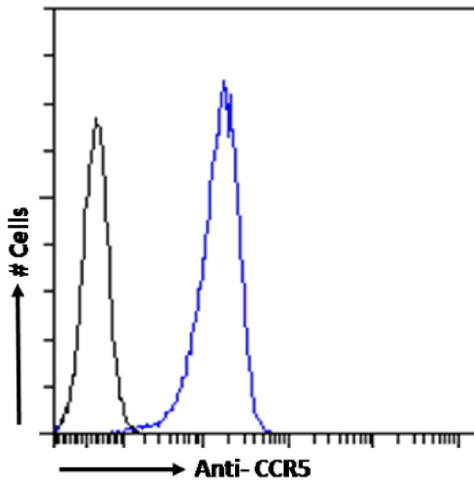
[View online »](#)

**Database Link:** [Entrez Gene 1234 Human P51681](#)

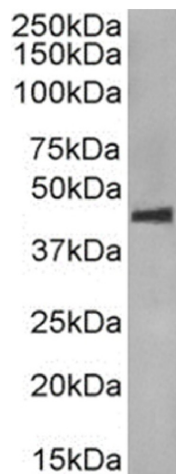
**Synonyms:** CC-CKR-5; CCCKR5; CCR-5; CD195; chemr13; CKR-5; CKR5; CMKBR5; FLJ78003; IDDM22; OTTHUMP00000209784

**Note:** This chimeric rabbit antibody was made using the variable domain sequences of the original Mouse IgG1 format, for improved compatibility with existing reagents, assays and techniques.

**Product images:**



Flow cytometry using the anti-CCR5 (phosphoserine 349) antibody E11/19 (TA386397). U937 cells were fixed using 2% PFA and stained with anti-unknown specificity antibody ([TA385792]; isotype control, black line) or the rabbit IgG1 version of E11/19 (TA386397, blue line) at a dilution of 1:100 for 1h at RT. After washing, the bound antibody was detected using a goat anti-rabbit IgG AlexaFluor® 488 antibody at a dilution of 1:1000 and cells analyzed using a FACSCanto flow-cytometer.



Western Blot using anti-CCR5 (phosphoserine 349) antibody E11/19 (TA386397) Molt4 cell lysate (35µg protein in RIPA buffer) was resolved on a SDS PAGE gel and blots were probed with the chimeric rabbit version of E11/19 (TA386397) at 0.1 µg/ml before detection using an anti-rabbit secondary antibody. A primary incubation of 1h was used and protein was detected by chemiluminescence.