

Product datasheet for **TA386395**

CCR5 Rabbit Monoclonal Antibody [Clone ID: T21/8]

Product data:

Product Type:	Primary Antibodies
Clone Name:	T21/8
Applications:	ELISA, FC, IF, IP, WB
Reactivity:	Human
Host:	Rabbit
Isotype:	IgG, kappa
Clonality:	Monoclonal
Immunogen:	This antibody was raised by immunizing mice with intact RBL-CCR5 cells.
Specificity:	<p>T21/8 antibody binds with high affinity to a CCR5 N-terminal epitope. CCR5 is a receptor for a number of inflammatory CC-chemokines including CCL3/MIP-1-alpha, CCL4/MIP-1-beta and RANTES.</p> <p>T21/8 antibody is recommended for the detection and analysis of CCR5 via various methods. For instance, one group used this antibody to detect intracellular localization of CCR5 in RBL-CCR5 cells via immunofluorescence staining (Pollok-Kopp et al., 2003). Another group investigated ligand-mediated down-modulation of CCR5 via flow cytometry, utilizing T21/8 antibody (Fox et al., 2015). With other anti-CCR5 antibodies which react with CCR5 phosphorylated on different serine residues (Ab01578; Ab01579), it can be used to study dynamic regulation of CCR5 and phosphorylation mechanisms.</p>
Formulation:	PBS with 0.02% Proclin 300.
Concentration:	lot specific
Conjugation:	Unconjugated
Storage:	Please store at 4°C for up to 3 months. For longer storage, aliquot and store at -20°C. Avoid freeze and thaw cycles.
Stability:	3 years from dispatch.
Gene Name:	C-C motif chemokine receptor 5 (gene/pseudogene)
Database Link:	Entrez Gene 1234 Human P51681

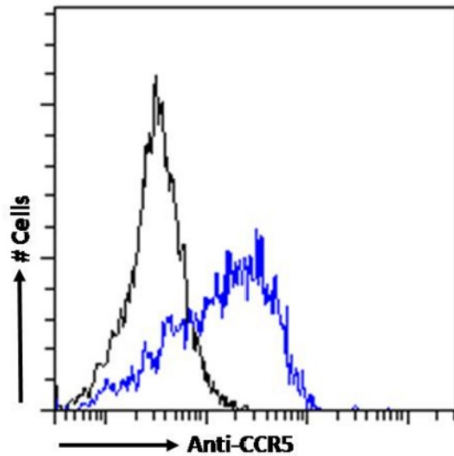


[View online »](#)

Synonyms: CC-CKR-5; CCCKR5; CCR-5; CD195; chemr13; CKR-5; KCR5; CMKBR5; FLJ78003; IDDM22; OTTHUMP00000209784

Note: This chimeric rabbit antibody was made using the variable domain sequences of the original Mouse IgG2a format, for improved compatibility with existing reagents, assays and techniques.

Product images:



Flow cytometry using the Anti-CCR5 antibody T21/8 (TA386395). Paraformaldehyde fixed U937 cells were stained with anti-unknown specificity antibody ([TA385792]; isotype control, black line) or the rabbit IgG version of T21/8 (TA386395, blue line) at a dilution of 1:100 for 1h at RT. After washing, the bound antibody was detected using a goat anti-rabbit IgG AlexaFluor® 488 antibody at a dilution of 1:1000 and cells analyzed using a FACSCanto flow-cytometer.