

Product datasheet for **TA386393**

C5R1 (C5AR1) Rabbit Monoclonal Antibody [Clone ID: 32-G1]

Product data:

Product Type: Primary Antibodies

Clone Name: 32-G1

Applications: IF, WB

Reactivity: Human

Host: Rabbit

Isotype: IgG, kappa

Clonality: Monoclonal

Immunogen: This antibody was raised by immunizing mice a synthetic C5aR C-terminal phosphopeptide that contained phosphoserine instead of serine at position 334 and also at the neighboring phosphorylation sites Ser-332 and Ser-338.

Specificity: The 32-G1 antibody recognizes C5aR which has its serine 334 phosphorylated. The mAb 32-G1 reacted specifically with a C5aR peptide that contained phosphoserine 334 and also reacted with C5aRs that were isolated from C5a-stimulated, transfected RBL-C5aR cells. It did not recognize a receptor mutant (C5aR-S-) with alanine replacement of all six C-terminal serine phosphorylation sites (Pollok-Kopp et al., 2007). Antibody 32-G1 specifically reacts with C5aR phosphoserine 334, independent of the phosphorylation state of the neighboring serine residues (Pollok-Kopp et al., 2007). Studies with Bt2cAMP-treated U937 cells show that 32-G1 specifically reacts with ligand-activated C5aR at endogenous receptor expression levels but only weakly recognizes C5aR isolated from unstimulated cells (Pollok-Kopp et al., 2007).

The 32-G1 antibody is recommended for the detection and analysis of C5aR (CD88) phosphorylated on Ser-334. For instance, this antibody was successfully used in the identification of C5aR protein in a U937 cell lysate via Western blot (Pollok-Kopp et al., 2007).

Formulation: PBS with 0.02% Proclin 300.

Concentration: lot specific

Conjugation: Unconjugated

Storage: Please store at 4°C for up to 3 months. For longer storage, aliquot and store at -20°C. Avoid freeze and thaw cycles.

Stability: 3 years from dispatch.



[View online »](#)

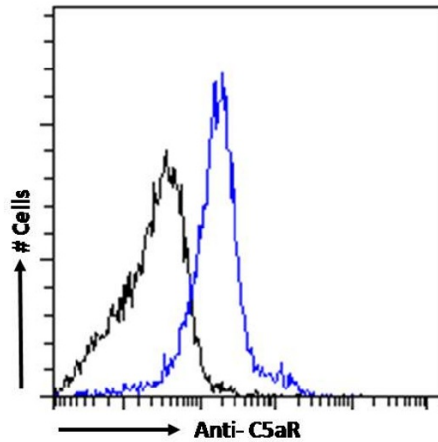
Gene Name: complement component 5a receptor 1

Database Link: [Entrez Gene 728 Human P21730](#)

Synonyms: C5A; C5a-R; C5AR; C5R1; CD88

Note: This chimeric rabbit antibody was made using the variable domain sequences of the original Mouse IgG1 format, for improved compatibility with existing reagents, assays and techniques.

Product images:



Flow cytometry using the Anti-C5aR antibody 32-G1 (TA386393). U937 cells were stained with anti-unknown specificity antibody ([TA385792]; isotype control, black line) or the rabbit IgG version of 32-G1 (TA386393, blue line) at a dilution of 1:100 for 1h at RT. After washing, the bound antibody was detected using a goat anti-rabbit IgG AlexaFluor® 488 antibody at a dilution of 1:1000 and cells analyzed using a FACSCanto flow-cytometer.