

Product datasheet for **TA386389**

B7 H6 (NCR3LG1) Rabbit Monoclonal Antibody [Clone ID: 17B1.3]

Product data:

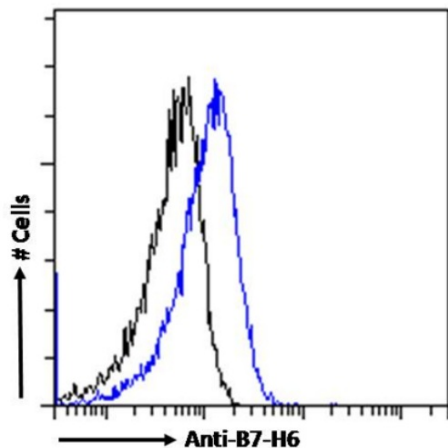
Product Type:	Primary Antibodies
Clone Name:	17B1.3
Applications:	FC, IF
Reactivity:	Human
Host:	Rabbit
Isotype:	IgG, kappa
Clonality:	Monoclonal
Immunogen:	Immunised mice with extracellular domain of human B7-H6 and selected on the basis of specific reactivity by P815.B7-H6, but not with P815.B7-H1.
Specificity:	<p>mAb 17B1.3 specifically recognises B7-H6. 17B1.3 reacted with human tumour cell lines constitutively expressing B7-H6 such as HeLa cells. Fab 17B1.3 does not interfere with the binding of B7-H6 to NKp30, but nevertheless blocks NK cell activation.</p> <p>B7-H6 is not detected in normal human tissues at steady state but is expressed on tumour cells, so tumour cells can be detected by NK cells. This article describes the study of the mechanisms that govern the induction of B7-H6 on primary cells as well as its consequences in vitro and in vivo.</p>
Formulation:	PBS with 0.02% Proclin 300.
Concentration:	lot specific
Conjugation:	Unconjugated
Storage:	Please store at 4°C for up to 3 months. For longer storage, aliquot and store at -20°C. Avoid freeze and thaw cycles.
Stability:	3 years from dispatch.
Gene Name:	natural killer cell cytotoxicity receptor 3 ligand 1
Database Link:	Entrez Gene 374383 Human Q68D85
Synonyms:	B7-H6; B7H6; DKFZp686O24166



[View online »](#)

Note: This chimeric rabbit antibody was made using the variable domain sequences of the original Mouse IgG1 format, for improved compatibility with existing reagents, assays and techniques.

Product images:



Flow cytometry using the Anti-B7-H6 antibody 17B1.3 (TA386389). Paraformaldehyde fixed HeLa cells were stained with anti-unknown specificity antibody ([TA385792]; isotype control, black line) or the rabbit IgG version of 17B1.3 (TA386389, blue line) at a dilution of 1:100 for 1h at RT. After washing, the bound antibody was detected using a goat anti-rabbit IgG AlexaFluor® 488 antibody at a dilution of 1:1000 and cells analyzed using a FACSCanto flow-cytometer.