

Product datasheet for **TA386385**

VCAM1 Rabbit Monoclonal Antibody [Clone ID: B-K9 (C106-K9)]

Product data:

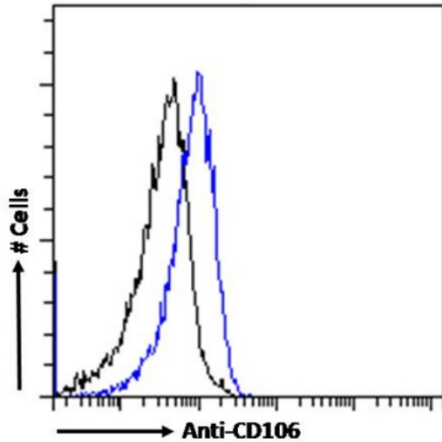
Product Type:	Primary Antibodies
Clone Name:	B-K9 (C106-K9)
Applications:	BI, FC
Reactivity:	Human
Host:	Rabbit
Isotype:	IgG, kappa
Clonality:	Monoclonal
Immunogen:	This antibody was raised by immunizing Balb/c mice against activated human umbilical vein endothelial cells (HUVEC).
Specificity:	<p>B-K9 antibody recognizes CD106 (VCAM1). CD106 is a member of the Ig superfamily. It is a cell surface sialoglycoprotein expressed by cytokine-activated endothelium. This type I membrane protein mediates leukocyte-endothelial cell adhesion and signal transduction, and may play a role in the development of arteriosclerosis and rheumatoid arthritis.</p> <p>B-K9 antibody inhibits the binding of leukocytes to VCAM-1 on stimulated endothelial cells, and thus it blocks the ability of white blood cells to attach themselves to the activated epithelium during, for instance, inflammation. Consequently, this antibody might be used in research where leukocytes adhesion-blocking is required (Uotila et al., 2014; Wagner et al. 2011).</p>
Formulation:	PBS with 0.02% Proclin 300.
Concentration:	lot specific
Conjugation:	Unconjugated
Storage:	Please store at 4°C for up to 3 months. For longer storage, aliquot and store at -20°C. Avoid freeze and thaw cycles.
Stability:	3 years from dispatch.
Gene Name:	vascular cell adhesion molecule 1
Database Link:	Entrez Gene 7412 Human P19320


[View online »](#)

Synonyms: CD106; DKFZp779G2333; INCAM-100; L1CAM; MGC99561

Note: This chimeric rabbit antibody was made using the variable domain sequences of the original Mouse IgG1 format, for improved compatibility with existing reagents, assays and techniques.

Product images:



Flow cytometry using the Anti-CD106 antibody B-K9 (C106-K9) (TA386385). Paraformaldehyde fixed K562 cells were stained with anti-unknown specificity antibody ([TA385792]; isotype control, black line) or the rabbit IgG version of B-K9 (C106-K9) (TA386385, blue line) at a dilution of 1:100 for 1h at RT. After washing, the bound antibody was detected using a goat anti-rabbit IgG AlexaFluor® 488 antibody at a dilution of 1:1000 and cells analyzed using a FACSCanto flow-cytometer.