

Product datasheet for TA386375

CD63 Rabbit Monoclonal Antibody [Clone ID: NK-1-C3]

Product data:

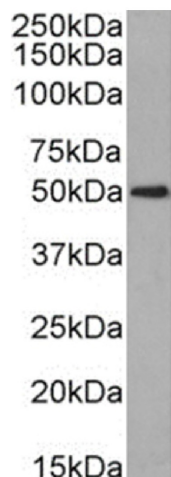
Product Type:	Primary Antibodies
Clone Name:	NK-1-C3
Applications:	FC, IF, IHC, IP, WB
Reactivity:	Human, Mouse
Host:	Rabbit
Isotype:	IgG, kappa
Clonality:	Monoclonal
Immunogen:	This antibody was raised by immunizing BALB/c mice with a plasma membrane preparation of the human melanoma MeWo cells.
Specificity:	<p>This antibody recognizes CD63. The tetraspanin CD63 is a lysosomal membrane glycoprotein that translocates to the plasma membrane after platelet activation and plays a role in the activation of cellular signaling cascades.</p> <p>The antibody NK-1-C3 has been widely used for the detection and analysis of CD63 via various methods. For instance, it was utilized as a marker of late endosomes and exosomes and the expression of CD63 was analysed via flow cytometry (Wang et al., 2019). Furthermore, NK-1-C3 (NK1/C3) proved successful in labelling CD63 in multiple tissues, for example, when localizing CD63 in murine retinal pigment epithelium (RPE)/choroid tissue (Wang et al., 2009). Similarly, this antibody was used to detect CD63 on melanoma cells via immunofluorescence staining (Khazen et al., 2016).</p>
Formulation:	PBS with 0.02% Proclin 300.
Concentration:	lot specific
Conjugation:	Unconjugated
Storage:	Please store at 4°C for up to 3 months. For longer storage, aliquot and store at -20°C. Avoid freeze and thaw cycles.
Stability:	3 years from dispatch.
Gene Name:	CD63 molecule
Database Link:	Entrez Gene 967 Human P08962


[View online »](#)

Synonyms: granulophysin; LAMP-3; ME491; MLA1; OMA81H; tetraspanin-30; Tspan-30; TSPAN30

Note: This chimeric rabbit antibody was made using the variable domain sequences of the original Mouse IgG1 format, for improved compatibility with existing reagents, assays and techniques.

Product images:



Western Blot using anti-CD63 antibody NK-1-C3 (TA386375) K562 cell lysate (35µg protein in RIPA buffer) was resolved on a SDS PAGE gel and blots were probed with the chimeric rabbit version of NK-1-C3 (TA386375) at 0.1 µg/ml before detection using an anti-rabbit secondary antibody. A primary incubation of 1h was used and protein was detected by chemiluminescence.