

Product datasheet for **TA386368**

CD43 (SPN) Rabbit Monoclonal Antibody [Clone ID: 84-3C1]

Product data:

Product Type:	Primary Antibodies
Clone Name:	84-3C1
Applications:	FC, IF, IHC, IP, WB
Reactivity:	Human
Host:	Rabbit
Isotype:	IgG, kappa
Clonality:	Monoclonal
Immunogen:	This antibody was raised by immunizing mice with stimulated human leukocytes.
Specificity:	<p>This antibody recognizes CD43 which is a predominant cell surface sialoprotein of leukocytes which regulates multiple T-cell functions, including T-cell activation, proliferation, differentiation, trafficking and migration.</p> <p>This antibody can be used in the identification of malignant lymphomas. CD43 is expressed on 22-37% of B-cell lymphomas and, at the same time, it is not expressed on reactive B-cells. Consequently, B-lineage population that co-expresses CD43 is highly likely to be a malignant lymphoma. If used with an anti-CD20 antibody, this clone may be utilized in the immunophenotyping of the lymphomas in formalin-fixed tissues, as Co-staining of a lymphoid infiltrate with anti-CD20 and anti-CD43 usually indicates lymphoma. Importantly, 84-3C1 antibody can be used for the detection of CD43 via various methods. For instance, it was successful in identifying that antigen in a lysate of dendritic cells' platelet via Western blot (Julien et al., 2007). Finally, another group used this antibody during flow cytometric analysis a sample of B-cells (Yoon et al., 2017).</p>
Formulation:	PBS with 0.02% Proclin 300.
Concentration:	lot specific
Conjugation:	Unconjugated
Storage:	Please store at 4°C for up to 3 months. For longer storage, aliquot and store at -20°C. Avoid freeze and thaw cycles.
Stability:	3 years from dispatch.
Gene Name:	sialophorin



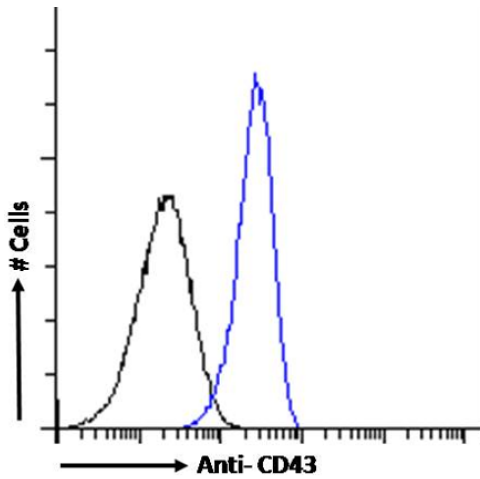
[View online »](#)

Database Link: [Entrez Gene 6693 Human P16150](#)

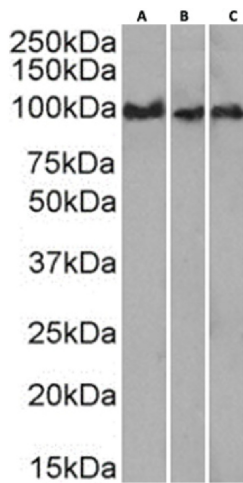
Synonyms: CD43; Galactoglycoprotein; GALGP; GPL115; leukosialin; LSN; Sialophorin

Note: This chimeric rabbit antibody was made using the variable domain sequences of the original Mouse IgG2b format, for improved compatibility with existing reagents, assays and techniques.

Product images:



Flow cytometry using the anti-CD43 antibody 84-3C1 (TA386368). K562 cells were fixed using 2% PFA and stained with anti-unknown specificity antibody ([TA385792]; isotype control, black line) or the rabbit IgG1 version of 84-3C1 (TA386368, blue line) at a dilution of 1:100 for 1h at RT. After washing, the bound antibody was detected using a goat anti-rabbit IgG AlexaFluor® 488 antibody at a dilution of 1:1000 and cells analyzed using a FACSCanto flow-cytometer.



Western Blot using anti-CD43 antibody 84-3C1 (TA386368) Daudi(A) cell lysate, K562(B) cell lysate and human bone marrow(C) tissue lysate (35µg protein in RIPA buffer) was resolved on a SDS PAGE gel and blots were probed with the chimeric rabbit version of 84-3C1f (TA386368) at 0.1 µg/ml before detection using an anti-rabbit secondary antibody. A primary incubation of 1h was used and protein was detected by chemiluminescence.