

## Product datasheet for TA386366

### CD37 Rabbit Monoclonal Antibody [Clone ID: IPO-24 (ZC37-24)]

#### Product data:

Product Type:	Primary Antibodies
Clone Name:	IPO-24 (ZC37-24)
Applications:	FC, IF, IHC
Reactivity:	Human
Host:	Rabbit
Isotype:	IgG, kappa
Clonality:	Monoclonal
Immunogen:	This antibody was raised by immunizing mice with spleen cells of a patient with hairy cell leukemia.
Specificity:	<p>This antibody recognizes CD37, which is a cell surface protein, present mostly on mature B cells and B cell malignancies.</p> <p>This antibody is recommended for the analysis and detection of B cells and their malignancies as CD37 is a valuable and stable marker for peripheral mature B-cells and corresponding malignancies, such as B-cell chronic lymphocytic leukemia (B-CLL), hairy cell leukemia (HCL), and all types of B-cell non-Hodgkin's lymphoma (B-NHL). Consequently, this antibody might be useful for the treatment of B cell malignancies and autoimmune and inflammatory diseases that involve B cells in their pathology. Finally, IPO-24 antibody, might be used to identify CD37 via various techniques. For instance, it was used to evaluate CD37 expression in mantle cell lymphoma samples via immunohistochemistry (Leshchenko et al., 2010).</p>
Formulation:	PBS with 0.02% Proclin 300.
Concentration:	lot specific
Conjugation:	Unconjugated
Storage:	Please store at 4°C for up to 3 months. For longer storage, aliquot and store at -20°C. Avoid freeze and thaw cycles.
Stability:	3 years from dispatch.
Gene Name:	CD37 molecule

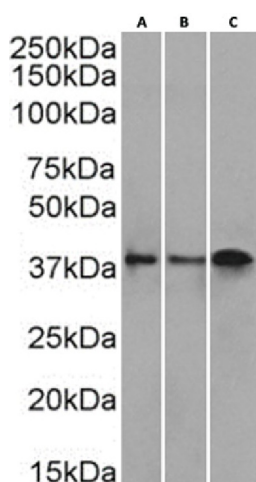

[View online »](#)

**Database Link:** [Entrez Gene 951 Human P11049](#)

**Synonyms:** GP52-40; MGC120234; tetraspanin-26; Tspan-26; TSPAN26

**Note:** This chimeric rabbit antibody was made using the variable domain sequences of the original Mouse IgG2b format, for improved compatibility with existing reagents, assays and techniques.

### Product images:



Western Blot using anti-CD37 antibody IPO-24 (ZC37-24) (TA386366) Daudi cell lysate(A), human spleen(B), and tonsil(C) tissue lysate (35µg protein in RIPA buffer) was resolved on a SDS PAGE gel and blots were probed with the chimeric rabbit version of IPO-24 (ZC37-24) (TA386366) at 2 µg/ml before detection using an anti-rabbit secondary antibody. A primary incubation of 1h was used and protein was detected by chemiluminescence.