

Product datasheet for **TA386363**

CD1 (CD1A) Rabbit Monoclonal Antibody [Clone ID: CBT6]

Product data:

Product Type:	Primary Antibodies
Clone Name:	CBT6
Applications:	ELISA, FC, IHC, IP
Reactivity:	Human
Host:	Rabbit
Isotype:	IgG, kappa
Clonality:	Monoclonal
Immunogen:	This antibody was raised by immunizing mice with the human CD1a protein.
Specificity:	The antibody is specific for the human CD1a protein.

The antibody can be used to inhibit Sag-induced proliferation of MHC class II thymocytes (Gregory. et al, 2000). It can increase intracellular calcium concentration in MHC class II thymocytes if used together with rabbit anti-mouse antibodies (Gregory. et al, 2000). This antibody is shown to be useful in flow cytometry (Gregory. et al, 2000). Immunofluorescence is a method for which this antibody can also be used (Brocks. et al, 2017). The antibody can be utilized in immunohistochemistry to separate human cells from cells of other animals (Goan. et al, 2000). The antibody is also recommended for use in ELISA and immunoprecipitation.

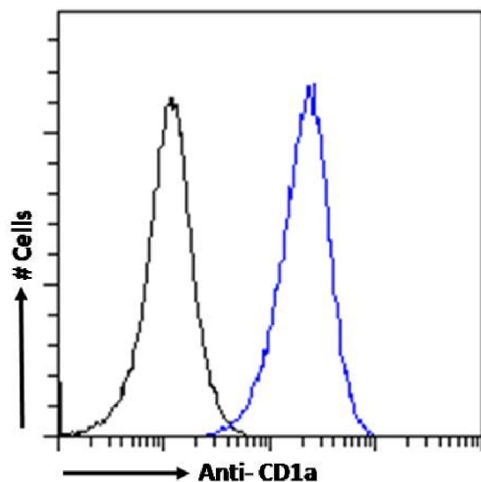
Formulation:	PBS with 0.02% Proclin 300.
Concentration:	lot specific
Conjugation:	Unconjugated
Storage:	Please store at 4°C for up to 3 months. For longer storage, aliquot and store at -20°C. Avoid freeze and thaw cycles.
Stability:	3 years from dispatch.
Gene Name:	CD1a molecule
Database Link:	Entrez Gene 909 Human P06126
Synonyms:	CD1; FCB6; HTA1; R4; T6



[View online »](#)

Note: This chimeric rabbit antibody was made using the variable domain sequences of the original Mouse IgG1 format, for improved compatibility with existing reagents, assays and techniques.

Product images:



Flow cytometry using the anti-CD1a antibody CBT6 (TA386363). Molt4 cells were fixed using 2% PFA and stained with anti-unknown specificity antibody ([TA385792]; isotype control, black line) or the rabbit IgG1 version of CBT6 (TA386363, blue line) at a dilution of 1:100 for 1h at RT. After washing, the bound antibody was detected using a goat anti-rabbit IgG AlexaFluor® 488 antibody at a dilution of 1:1000 and cells analyzed using a FACSCanto flow-cytometer.